

D2™

Milliken™

Convertible Flooring™

Care Instructions

D2™ Cut

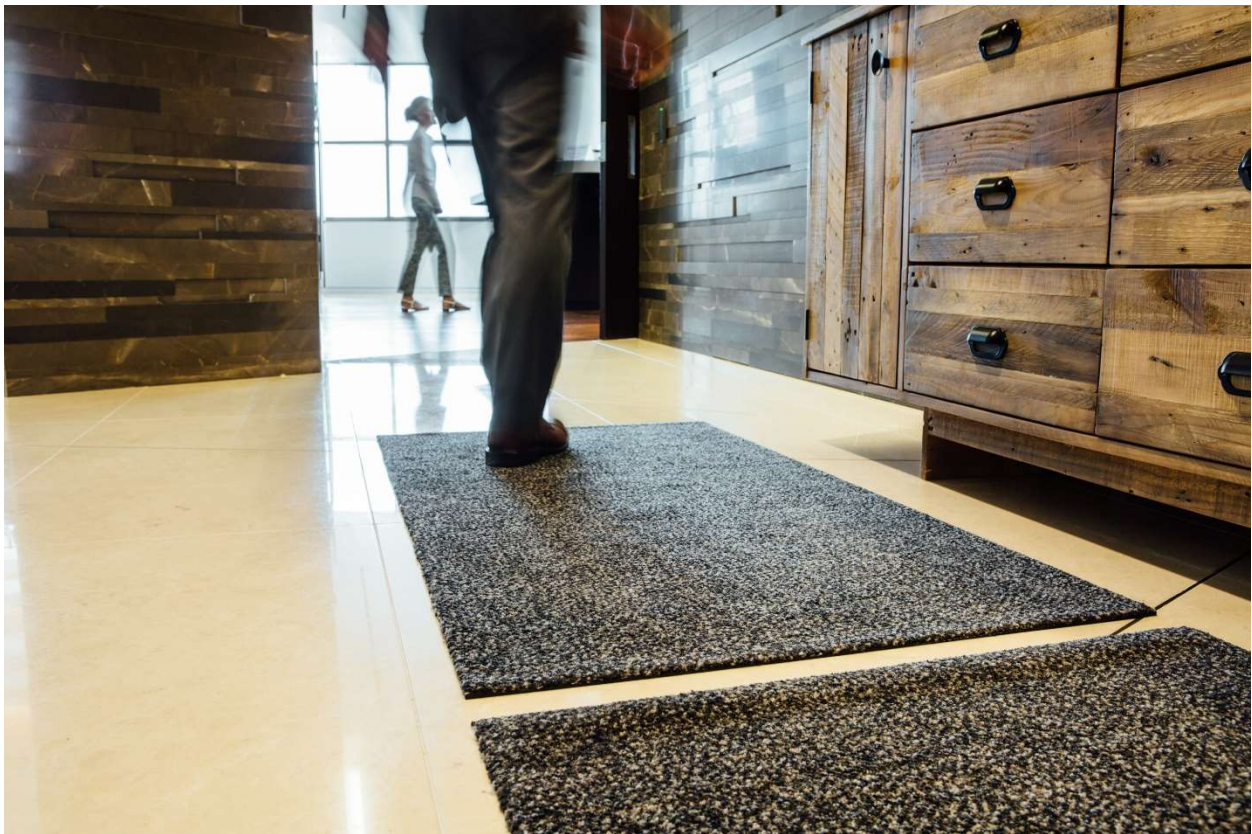


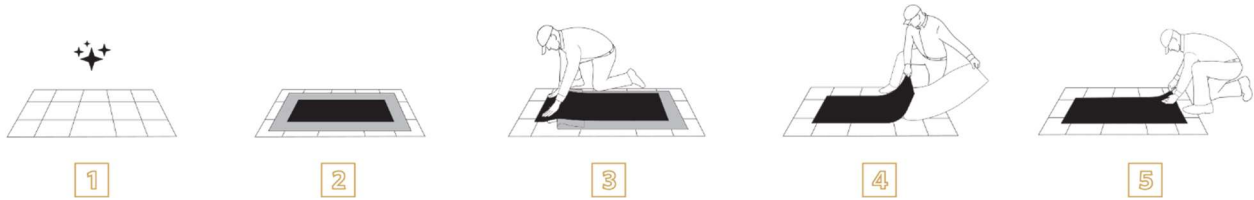
Table of Contents

1.0 Installation, Application, & Removal	3
1.1 D2 Base Installation	3
1.2 D2 Cut Top Application.....	3
1.3 D2 Cut Top Removal	4
1.4 D2 Base Removal.....	4
2.0 Storage & Handling	5
2.1 Storage.....	5
2.2 Temperature Limits	5
3.0 D2 Cleaning	6
3.1 Daily Cleaning	6
4.0 D2 Base	6
4.1 D2 Base Testing on Floor Surface Before Full Installation	6
4.2 D2 Base Magnetic Properties	7
5.0 General Warnings	7
5.1 D2 Cut Tops	7
5.2 D2 Bases.....	7
5.3 Repairs & Alterations	8
6.0 Important Warranty Information	8

1.0 Installation, Application, & Removal

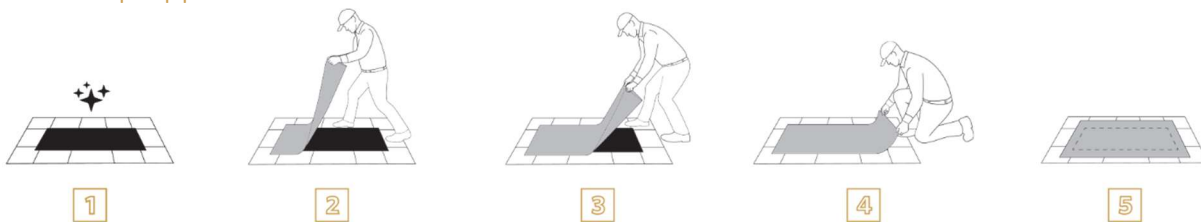
D2 Convertible Flooring is easy to use, but initial installation requires care and precision. These instructions are the recommended method of installing and maintaining the flooring system. Please follow these steps for best results.

1.1 D2 Base Installation



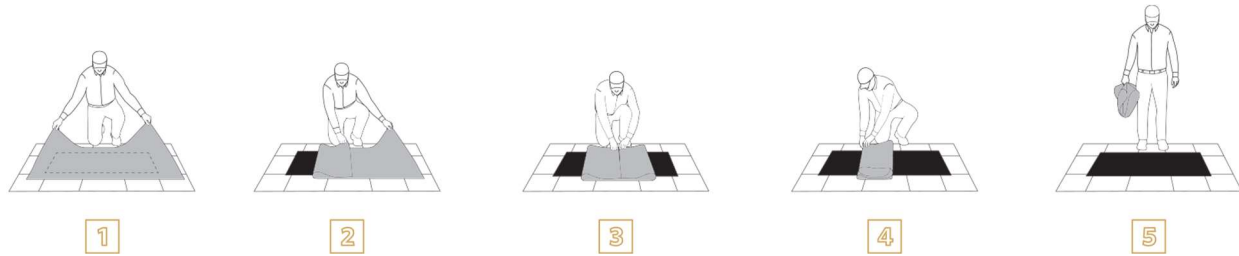
1. Inspect existing floor surface to ensure it is clean and dry.
2. Place D2 Top in desired install location, aligning with surroundings as needed. Centre the D2 Base (with backing still intact) over the D2 Top.
3. Fold one end of the D2 Top under the D2 Base. Peel backing to expose adhesive on one edge of the D2 Base and press firmly against floor surface.
4. Remove D2 Top from under the D2 Base and set aside. Peel backing from D2 Base in a fluid motion so that D2 Base lies flat on floor surface. Discard or store backing.
5. If needed, lift edge(s) and smooth out any visible air pockets.

1.2 D2 Top Application



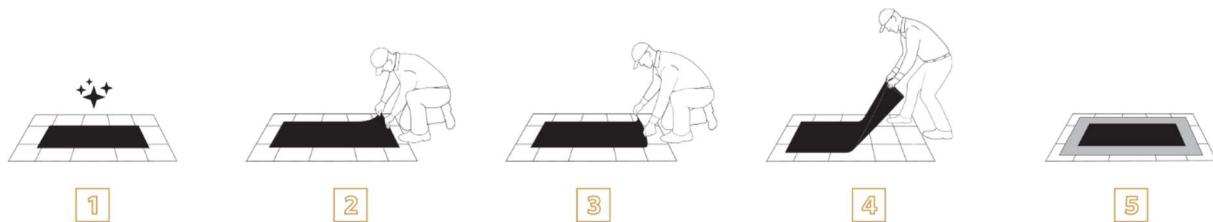
1. Inspect D2 Base to ensure surface is clean, dry and free of debris (See Section 3.0 for D2 Base cleaning instructions).
2. Centre-align and pull D2 Top over D2 Base.
3. Align D2 Top with surroundings. D2 Top does not slide or shift, so be as precise as possible.
4. Set D2 Top down in a fluid motion so that it lies flat on floor surface. If needed, smooth out D2 Top.
5. Check for any exposed D2 Base areas. D2 Top should be centred over D2 Base.

1.3 D2 Top Removal



1. Grab edges of D2 Top.
2. Fold one edge to the middle.
3. Fold opposite edge to the middle.
4. Fold D2 Top in half.
5. Lift D2 Top on the non-folded side to capture dirt and debris.

1.4 D2 Base Removal



1. Inspect D2 Base to ensure surface is clean, dry and free of debris.
2. Peel one corner of D2 Base toward the centre of the D2 Base.
3. Once first corner is lifted, repeat with closest corner.
4. With one end of the D2 Base now lifted, slowly lift the length of the D2 Base off the floor in a steady motion.
5. Once removed, lay the D2 Base flat with adhesive side up on a clean surface (such as a D2 Top). Store or re-install as needed.

Option #1 - Storing Used D2 Bases Flat

Cover the adhesive side of the D2 Base with a release liner, such as the original backing or a wax sheet.

1. Flat D2 Bases should always be flat when held and transported to prevent folds or creases.
2. For flat storage on pallets or racks, the stacking surface should be perfectly flat. This can be ensured by placing on top of cardboard sheets.

Option #2 - Storing Used D2 Bases Rolled

Roll D2 Base - with adhesive side facing inward - into a roll no tighter than 7.6 cm (3 inches) in diameter.

1. Keep the rolled D2 Base as-is. If stacking, D2 Bases should be stacked no more than 3 high.

2.0 Storage & Handling

2.1 Storage

D2 Cut Tops should not be stored folded.

D2 Cut Tops should be stored flat or rolled. If D2 Cut Tops are rolled, they should be rolled with the top surface of the D2 Cut Top facing out. If rolled D2 Cut Tops are stacked, they should be stacked no more than 4 high to prevent crushing and creasing.

New D2 Bases should always be stored flat. D2 Bases should never be folded.

Used D2 Bases (post-removal) should be stored as outlined in Section 1.4.

D2 Cut Tops and Bases should be stored indoors.

Storage in direct or reflected sunlight, even through windows, should be avoided.

D2 Cut Tops and Bases should be stored on a first in first out basis to facilitate full stock rotation.

2.2 Temperature Ranges

The recommended storage and installation temperatures for D2 Cut Tops and Bases ranges from 10°C/50°F to 21°C/70°F at a 50% relative humidity.

The product can be stored, installed and used outside these temperatures but may not be as easy to work with.

Bases should not be kept in storage for more than two years from the date of manufacture.

3.0 D2 Cleaning

3.1 Daily Cleaning

Thorough cleaning is recommended to ensure optimum performance and to extend the life of the product. The textiles will by their nature be the most abused of all floor covering finishes within the building. We therefore recommend the following maintenance regime.

Use of a powerful upright vacuum cleaner with a rotary brush, will remove loose dirt and debris. When needed, deep cleaning can be carried out with hot water extraction up to 50°C/122°F.

The presence of dirt, debris, and other contaminants on the top of the D2 Base weakens the performance of Milliken's proprietary Adaptex™ technology which can result in a weaker adhesion between the D2 Cut Top and Base. D2 Bases should be cleaned in place when the top of the D2 Base becomes soiled or dirty. The D2 Base can be cleaned with a broom, mop, vacuum, floor scrubber, or spray hose, with water or an all-purpose cleaning solution. The D2 Base should be dry before applying a D2 Cut Top.

Note: A Bonnet Buffing type machine should not be used on the D2 Cut Top.

For chewing gum removal, we recommend the use of Rid A Gum or a similar product.

4.0 D2 Base

D2 Convertible Flooring is designed for use on most common industrial and commercial floor coverings and surfaces; however, not all floor surfaces may be suitable for the adhesive on the D2 Base. All adhesives have some potential to leave residue or lift or discolour finish coatings, paint, and loose or pre-damaged flooring depending on the condition and age of the floor covering or surface.

4.1 D2 Base Testing on Floor Surface Before Full Installation

One should test a piece of a D2 Base in a non-conspicuous area before use. The test should include a sample of D2 Base under a load for a minimum of 48 hours before removal of the piece and inspection of the floor surface. Note that the customer or end-user assumes the risk that a D2 Base may damage or alter the existing floor covering or surface. (Please reference the **Warranties & Product Disclaimer** document for more information.).

D2 Bases are intended to stay in place and should not be removed during routine maintenance. When removal is necessary, the removal of a D2 Base should be performed by a trained professional.

4.2 D2 Base Magnetic Properties

The magnetism between a D2 Cut Top and its Base remains at a level that prevents relative motion between the Top and the Base over the normal life and use of the product so long as these care instructions are followed.

5.0 General Warnings

5.1 D2 Cut Tops

Do not use damaged D2 Cut Tops, as they may pose a safety hazard.

Do not launder D2 Cut tops.

Do not wash D2 Cut Tops in a dishwasher.

Do not dry-clean D2 Cut Tops.

Do not expose D2 Cut Tops to oxidizing agents (such as hydrogen peroxide, ozone or chlorine bleaches).

Do not expose D2 Cut Tops to acids or acids in mixtures with a pH below 6. Acids should not be used as spotting agents.

Do not expose D2 Cut Tops to basic solutions or bases in mixtures with pH greater than 10.

Do not expose D2 Cut Tops to organic solvents.

Care should always be taken when exposing D2 Cut Tops to any chemical agent. Check with Milliken to determine if the chemical agent is suitable for use with D2 Cut Tops.

5.2 D2 Bases

Do not use damaged D2 Bases, as they may pose a safety hazard.

Do not wash D2 Bases in a laundry.

Do not expose D2 Bases to oxidising agents (such as hydrogen peroxide, ozone or chlorine bleaches).

Do not expose D2 Bases to acids or acids in mixtures (such as a wash or rinse bath) with a pH below 6. Acids should not be used as spotting agents.

Do not expose D2 Bases to basic solutions or bases in mixtures with pH greater than 10.

Do not expose D2 Bases to organic solvents.

Care should always be taken when exposing D2 Bases to any chemical agent. Check with Milliken to determine if the chemical agent is suitable for use with D2 Bases.

5.3 Repairs & Alterations

D2 Cut Tops should not be repaired if they become damaged. D2 Cut Tops should not be altered in any way. Repairs or alterations to D2 Cut Tops will void the product warranty.

D2 Bases should not be repaired if they become damaged. D2 Bases should not be altered in any way, to include the cutting of D2 Bases into smaller sizes. Repairs or alterations to D2 Bases will void the product warranty.

6.0 Important Warranty Information

Any warranty on Milliken's D2™ Convertible Flooring™ will be void if the D2 Cut Tops and Bases are not used together and stored, handled, processed, used, and maintained in accordance with this document. In addition, no warranty is given for damage or deterioration caused through normal wear and tear. Please reference the Warranties & Product Disclaimer document for more information.