

**OBEX™**

Milliken

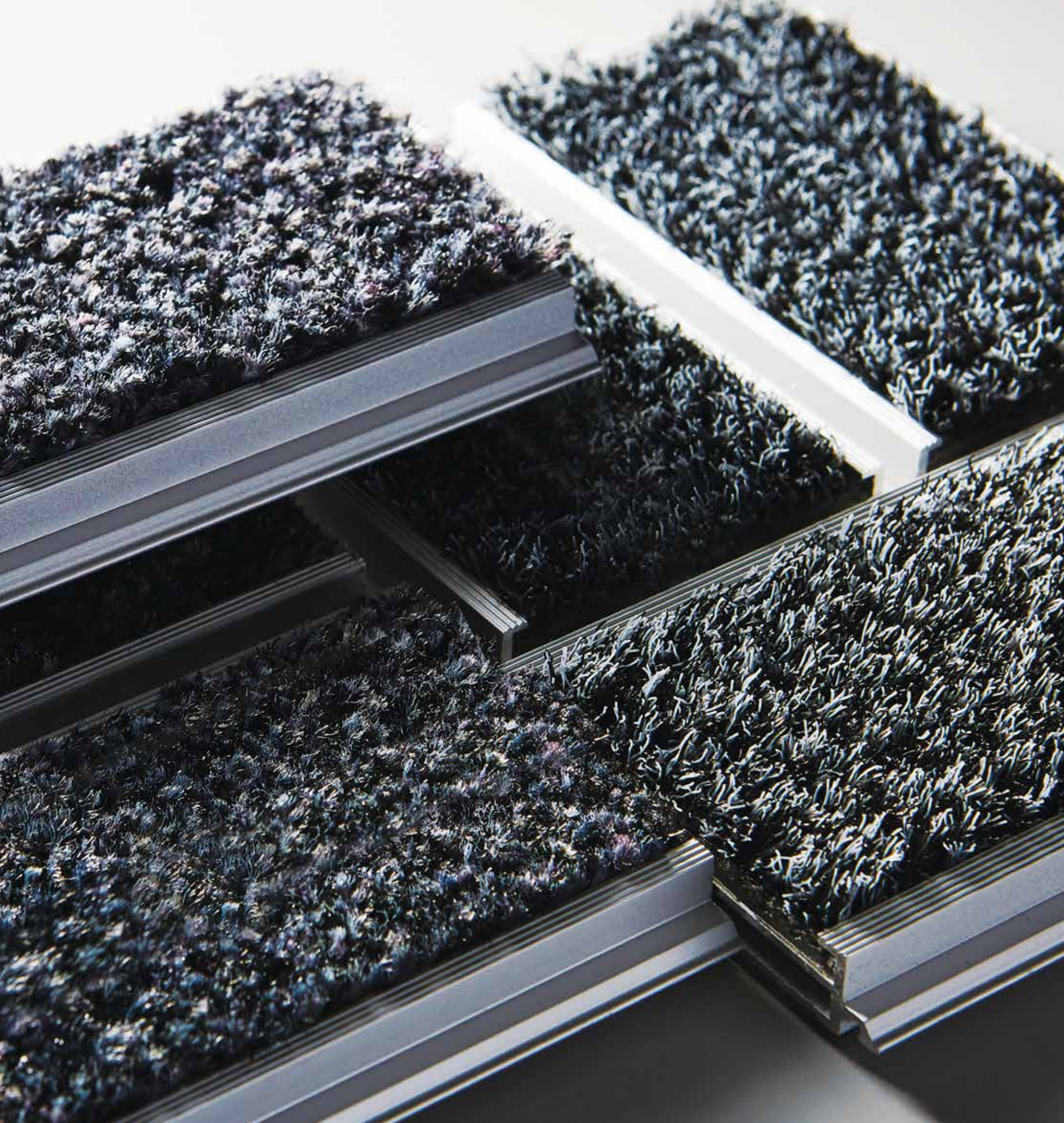
**Entrance Flooring**

**BAR**

*Milliken*







## OBEX™ Bar

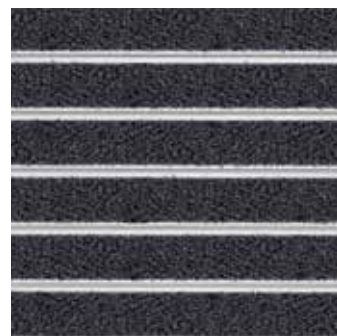
OBEX™ Bars are designed with a unique aluminum click-in system for simple installation directly on premises. Bars can be cut to fit any application—whether surface mounted on the floor or installed in recessed mat wells. Bars feature our Cut textile or Monofilament inserts with added backing for built-in sound insulation.





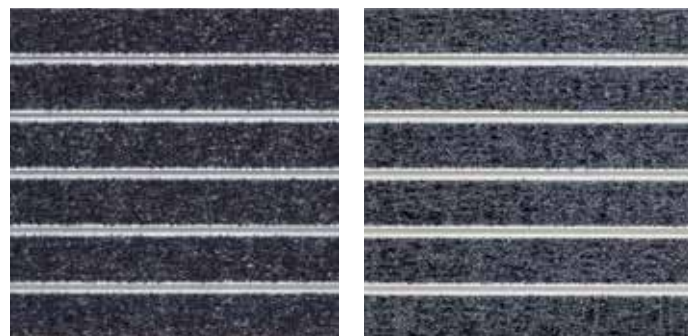
▶ Z2: Bar / Mono  
▶ Z3: Bar / Cut / Dark Grey

**OBEX™ Mono**



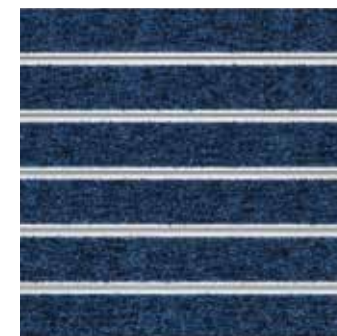
Grey

**OBEX™ Cut**



Dark Grey

Grey



Dark Blue



Brown



Red

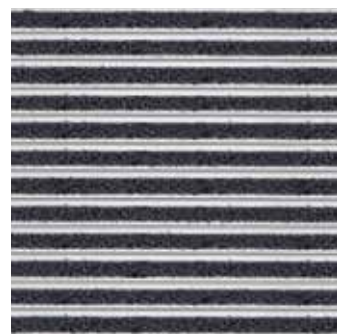
Available in  
11mm and  
16mm.





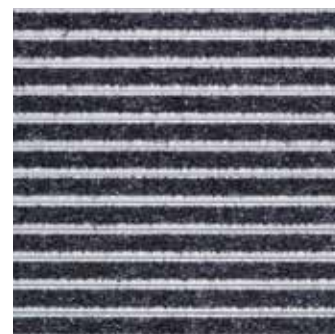
- ▶ Z1: Half Bar / Mono / Dark Grey
- ▶ Z2: Tile / CutX / Fizz / Dark Grey
- ▶ Z3: Mat / Cut / Galaxy / Dark Grey

**OBEX™ Mono | Half Bar**

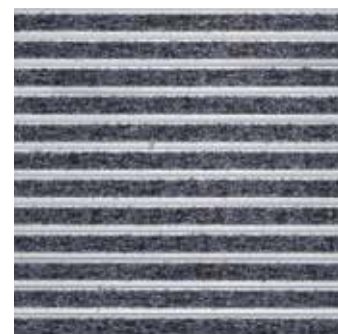


Grey

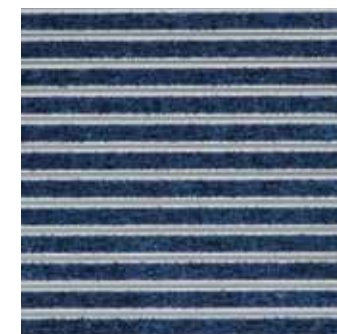
**OBEX™ Cut | Half Bar**



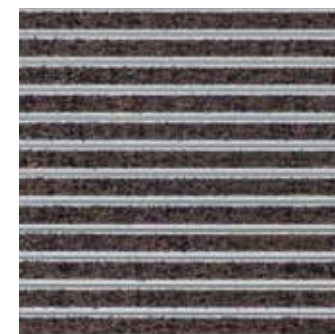
Dark Grey



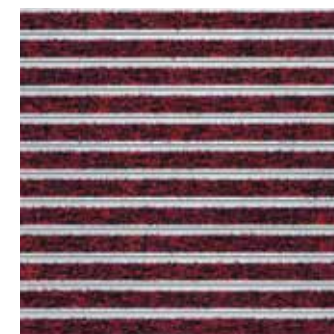
Grey



Dark Blue



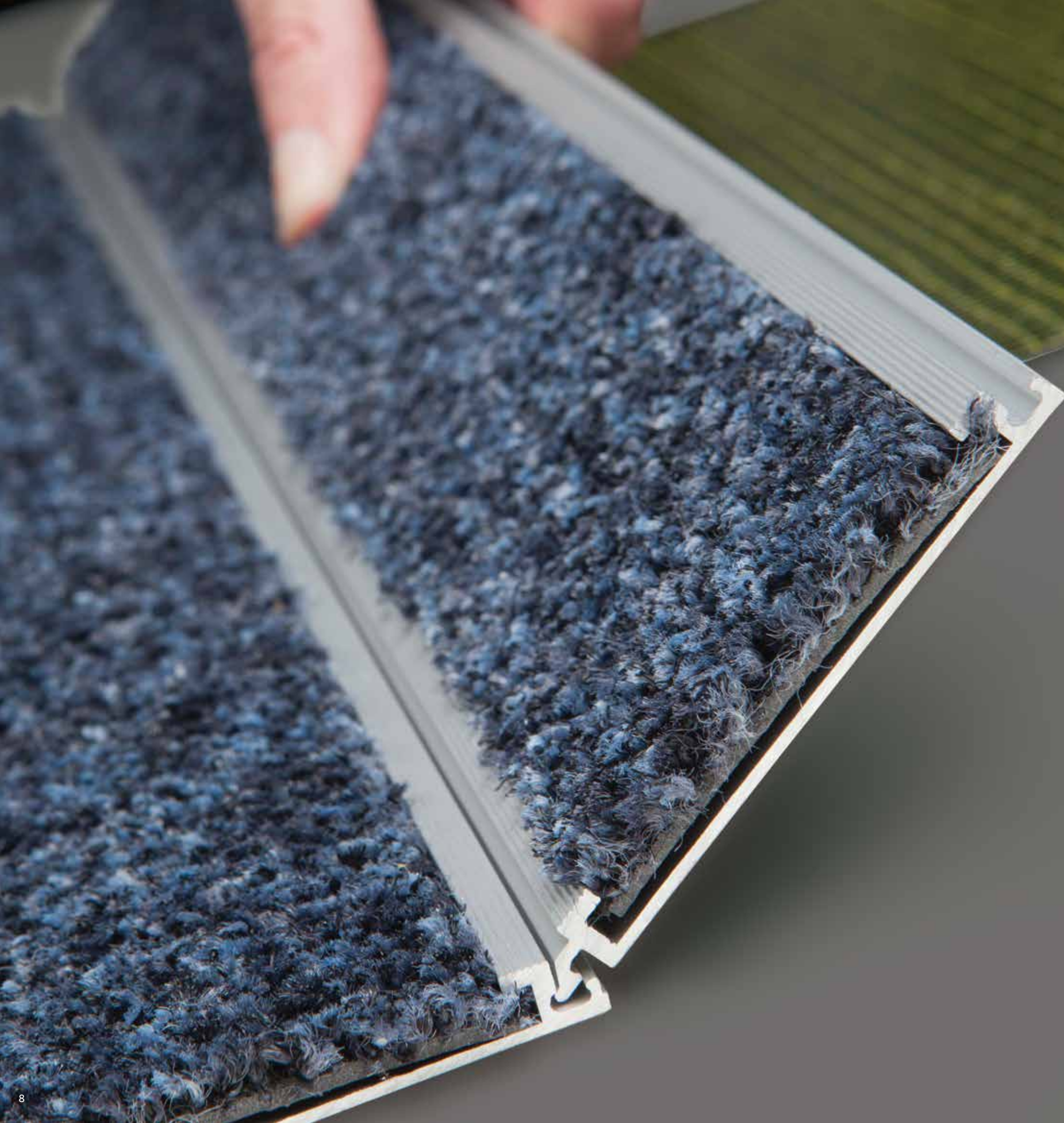
Brown



Red

Available in 11mm, 16mm and 22mm.

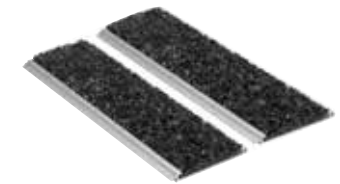




# Performance Made Simple

OBEX™ Bars feature a patented click-in profile system, making on-site installation simple. High quality aluminum material combined with 69 mm OBEX Cut or OBEX Mono inserts deliver superior scraping action, while the foam backing maximizes noise reduction from foot and rolled traffic.

## INDIVIDUAL PROFILE

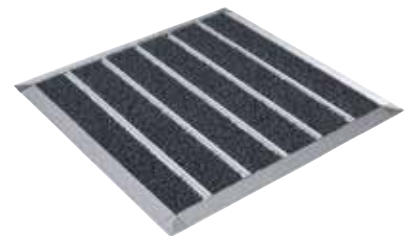


## INSTALLATION AND CLEANING MADE EASY

OBEX™ Bars are easy to install in a recessed mat well or surface mounted. Simple tools such as an electric handsaw can be used if adjustments on-site are required.

## SURFACE MOUNTED

For surface mounted installations, OBEX Bars feature a complete edging system and corners.



## RECESSED

For installation in recessed areas, OBEX Bars combine with start and finish profiles in "J" shape for a perfect finished look.



The closed structure of the OBEX Bar profile system allows for cleaning on-site without having to move or lift the product. Daily vacuuming is recommended; hot water extraction should be used if soiling remains visible after vacuuming.



# Covering the Zones

## Protection from the Outside In

To determine the most effective OBEX™ solution, our team evaluates your building's entry based on three distinct Zones. This process starts at the outside of the building, and addresses the entire pathway through any airlocks, vestibules, and lobby or reception areas. Because every facility is unique, breaking down these Zones helps define where entrance flooring should be installed, as well as what combinations of Forms and Materials will deliver the best protection and performance.

### ZONE 1 | OUTDOORS

**Location:** Outdoor area prior to building's entrance

**Recommendation:** Product with heavy scraping action

**Goal:** Trap grit, heavy dirt particles, and moisture, including snow, salt, and sand

### ZONE 2 | VESTIBULE / AIRLOCK

**Location:** Enclosed entrance of building

**Recommendation:** Dual-action product that combines scraping and absorption

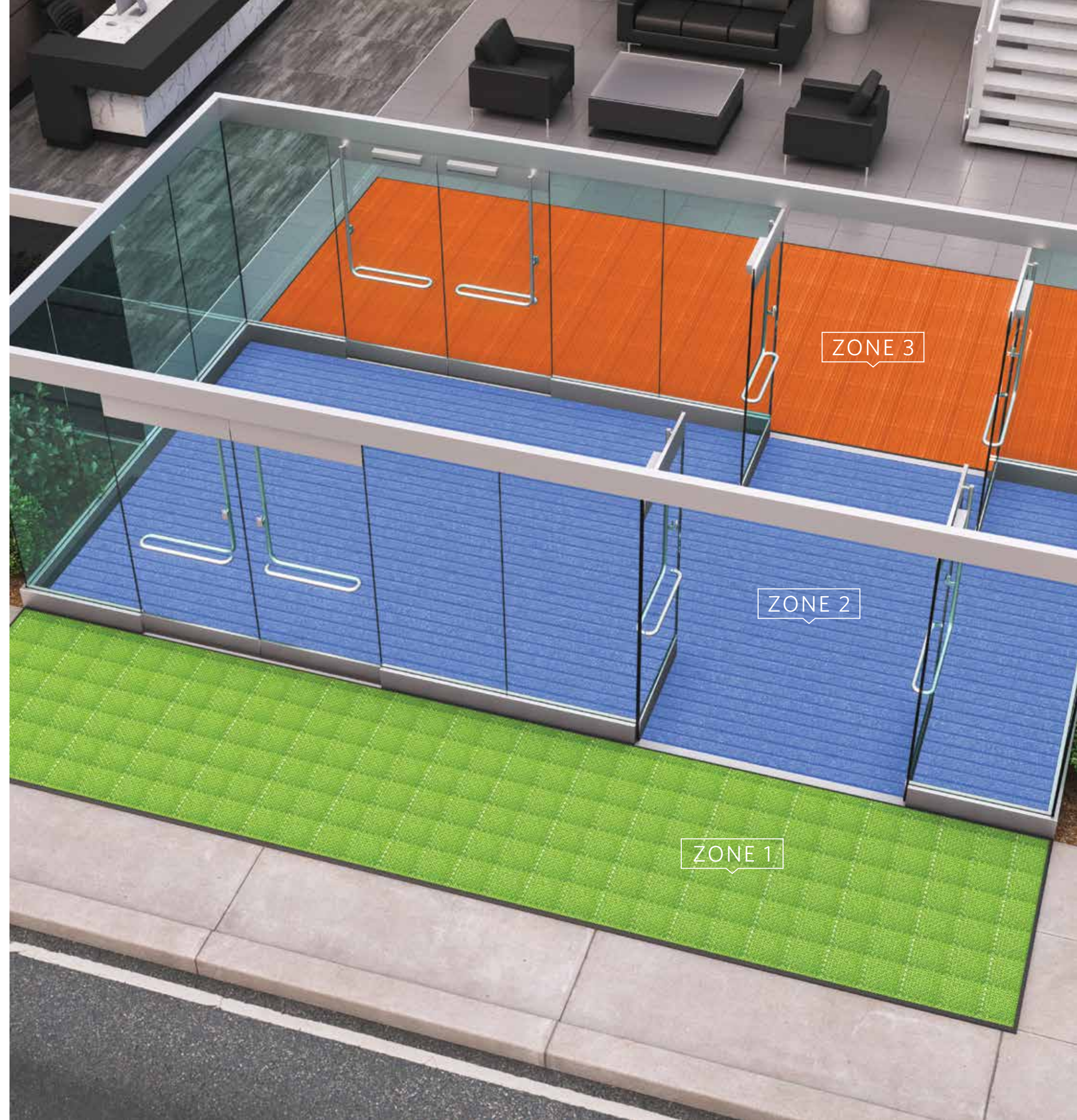
**Goal:** Collect dirt, debris, and moisture

### ZONE 3 | INDOORS

**Location:** Primary area(s) inside building

**Recommendation:** Product with high absorption qualities

**Goal:** Remove remaining moisture and small particles







# Introducing **OBEX VIA**

Our **Variable Installation Approach (VIA)** means you don't have to settle for generic, one-size-fits-all entrance flooring.

OBEX™ VIA is our site-specific analysis that starts with an assessment of your facility's unique environment, specific needs, and challenges.

We then match your requirements with our offering of effective Forms and industry-proven Materials.

Finally, VIA focuses the conversation on your preferences, resulting in a tailored entrance flooring system that delivers both performance and protection.

- O** **Objective - What do you need your entry to do?**  
Factor in variables such as weather conditions and the intensity of foot, rolled, and heavy cart traffic.
- B** **Barrier Level - Where and to what degree do you need protection?**  
Assess each Zone along the entry pathway, including vestibules, lobbies, and transition areas to determine available linear walk-off distance.
- E** **Enhance - What look and style do you want?**  
Review options for colour and pattern, as well as coordination with interior flooring products and any identity branding you may want.
- X** **Execute**  
Based on your answers to the previous questions, we can now identify and recommend the most effective, customised system of OBEX™ Forms and Materials.

# Bar Specifications

## OBEX™ Bar / Mono

**Bar Material**  
Extruded Aluminium Profile with Foam Base Layer

**Profile Width**  
69 mm

**Nominal Total Thickness**  
11 mm  
16 mm

**Textile Yarn Type**  
Econyl® Monofilament

**Textile Dye Method**  
Solution Dyed

**Nominal Total Weight**  
11 mm: 8,295 g/m<sup>2</sup>  
16 mm: 1,595 g/m<sup>2</sup>

## OBEX™ Bar / Cut

**Bar Material**  
Extruded Aluminium Profile with Foam Base Layer

**Profile Width**  
69 mm

**Nominal Total Thickness**  
11 mm  
16 mm

**Textile Yarn Type**  
Econyl® Nylon and Monofilament, Twisted and Heat-Set Multi/Monofilaments

**Textile Dye Method**  
DDI (Digital Dye Infusion)

**Nominal Total Weight**  
11 mm: 8,360 g/m<sup>2</sup>  
16 mm: 11,660 g/m<sup>2</sup>

## OBEX™ Half Bar / Mono

**Bar Material**  
Extruded Aluminium Profile with Foam Base Layer

**Profile Width**  
33 mm

**Nominal Total Thickness**  
11 mm  
16 mm  
22 mm

**Textile Yarn Type**  
Econyl® Monofilament

**Textile Dye Method**  
Solution Dyed

**Nominal Total Weight**  
11 mm: 9,800 g/m<sup>2</sup>  
16 mm: 12,800g/m<sup>2</sup>  
22 mm: 15,000 g/m<sup>2</sup>

## OBEX™ Half Bar / Cut

**Bar Material**  
Extruded Aluminium Profile with Foam Base Layer

**Profile Width**  
33 mm

**Nominal Total Thickness**  
11 mm  
16 mm  
22mm

**Textile Yarn Type**  
Econyl® Nylon and Monofilament, Twisted and Heat-Set Multi/Monofilaments

**Textile Dye Method**  
DDI (Digital Dye Infusion)

**Nominal Total Weight**  
11 mm: 9,850 g/m<sup>2</sup>  
16 mm: 12,850 g/m<sup>2</sup>  
22 mm: 15,050 g/m<sup>2</sup>



# Quick Reference Guide

Form - Material	Zone Application			Dirt/Debris Removal			Moisture Absorption			Installation Approach		
	Z1	Z2	Z3	Good	Better	Best	Good	Better	Best	Recessed	Surface	Wall to Wall
Bar - Mono 11mm	•	•				•				•	•	•
Bar - Mono 16mm	•	•				•				•		
Bar - Cut 11mm		•				•			•	•	•	•
Bar - Cut 16mm		•				•			•	•		
Half Bar - Mono 11mm	•	•				•				•	•	•
Half Bar - Mono 16mm or 22mm	•	•				•				•		
Half Bar - Cut 11mm		•				•			•	•	•	•
Half Bar - Cut 16mm or 22mm		•				•			•	•		
Grid - Vinyl Open 11mm	•				•					•	•	•
Grid - Vinyl Closed 11mm or 16mm		•			•					•	•	•
Grid - Mono Open 11mm	•					•				•	•	•
Grid - Mono Closed 11mm or 16mm		•				•				•	•	•
Grid - Cut Open 11mm		•				•			•	•	•	•
Grid - Cut Closed 11mm or 16mm		•				•			•	•	•	•
Tile - Cut		•	•		•				•	•	•	•
Tile - CutX		•	•			•		•		•	•	•
Tile - Loop		•	•	•				•		•	•	•
Roll - Cut		•	•		•				•	•	•	•
Mat - Mono	•	•				•					•	
Mat - Cut		•	•		•				•		•	



Milliken's integrated OBEX™ system of Forms and Materials optimises safety, wellness, and design from the outside in.

