

## OBEX™ Bar Installation and Maintenance

### General

OBEX™ Bar is a unique patented aluminum click-in profile system. Available in 11 mm and 16 mm thickness (and additionally 22 mm in the Half Bar), they allow cleaning without removing. OBEX™ Bar comes with fabric inserts in two material options, OBEX™ Mono and OBEX™ Cut, available in the 69 mm width for Bar and 33 mm width for Half Bar.



OBEX™ Bar / Mono



OBEX™ Bar / Cut

### Subfloor Preparation

Ensure subfloor is level, clean and free of contaminants. If greasy, clean with degreaser and prime. Use levelling compounds if necessary. It may also be necessary to screed up the recess, when depth is more than 16 mm.

### Installation

OBEX Bar is extremely easy to install on site thanks to its click-in profile system. Simple tools such as an electric handsaw can be used if adjustment on site is required. It is supplied with edging system and corners for surface mounted installations. For recessed installations OBEX™ Bar is supplied by default with start to finish profiles in 'J' shape for a perfect finish.

# OBEX™ | Milliken™ Entrance Flooring

1. OBEX™ Bars and finishing profiles are shipped in a cardboard tube cut to the specified length. Remove all materials and prepare surface for installation.



2. OBEX™ Bars are extremely easy to install on site thanks to the patented aluminum click-in system, which secures the profiles together. Profiles are supplied with a 2mm high density polyethylene foam backing to reduce noise and allow gluing to subfloor.



3. Screw J profile in place to secure it and start installation. Slide first OBEX Bar profile in place. Continue connecting Bar profiles to starting piece by holding at an angle and place into connecting hook. Lower the second section down until profile is flat with first section. Then repeat until all profiles are used. Install finishing J profile to last Bar piece, same as you started the installation.

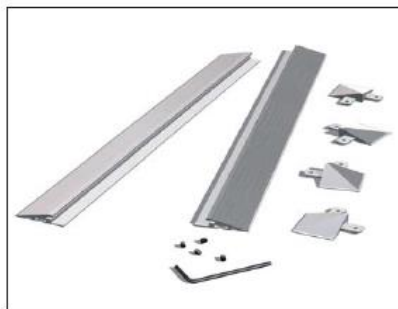
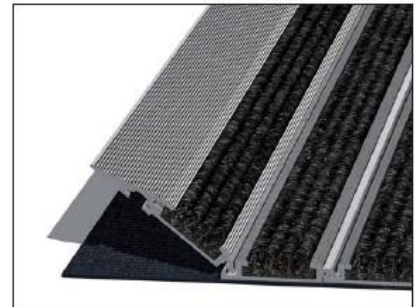
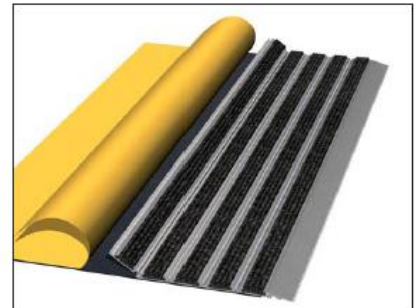
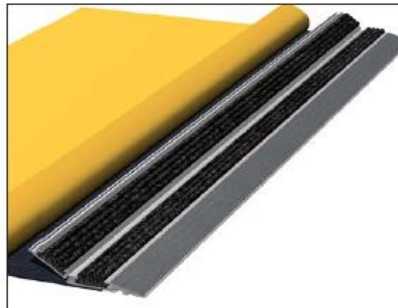
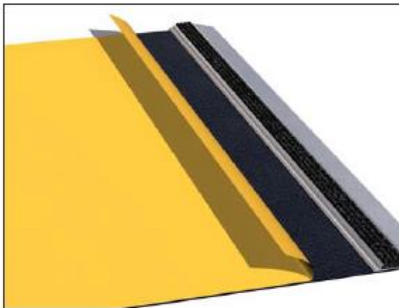


# OBEX™ | Milliken™ Entrance Flooring

4. For surface mounted installations an aluminum edging system will be supplied with the OBEX™ Bar profiles.

See detailed images below for step by step instructions required to assemble surface mounted options.

Note, surface mounted profiles do not come with pre-applied foam backing. Underlayment comes as separate sheet which helps hold assembly together.



For answers to questions about OBEX™ installation and maintenance procedures, please contact:  
Milliken Europe on: +44 1942 612999 or [protectiveflooringeurope@milliken.com](mailto:protectiveflooringeurope@milliken.com)  
Milliken Asia Pacific on: +8621 6145 5555 or [matsordersasiapacific@milliken.com](mailto:matsordersasiapacific@milliken.com)

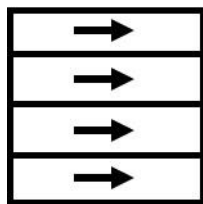
# OBEX™ | Milliken™ Entrance Flooring



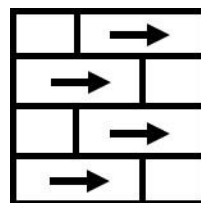
## Installation Options (recessed or surface mount)

If installation area width is less than 2.7 m, a monolithic installation is recommended. Single OBEX™ Bar profiles will be cut to span the entire width of area. If installation area is wider than 2.7 m, then an ashlar installation approach is recommended. OBEX™ Bar profiles can be butted together with the need for end to end connection. This will allow you to build out any width required.

Monolithic Install



Ashlar Install



# OBEX™ | Milliken™ Entrance Flooring

## Maintenance

OBEX™ Bar feature a unique textile with an open construction for easy dirt release when cleaning. The closed structure of the profile system allows cleaning on site without having to move or lift the product. Daily vacuuming is recommended, and a hot water extraction should be used if soiling remains visible after vacuuming.