

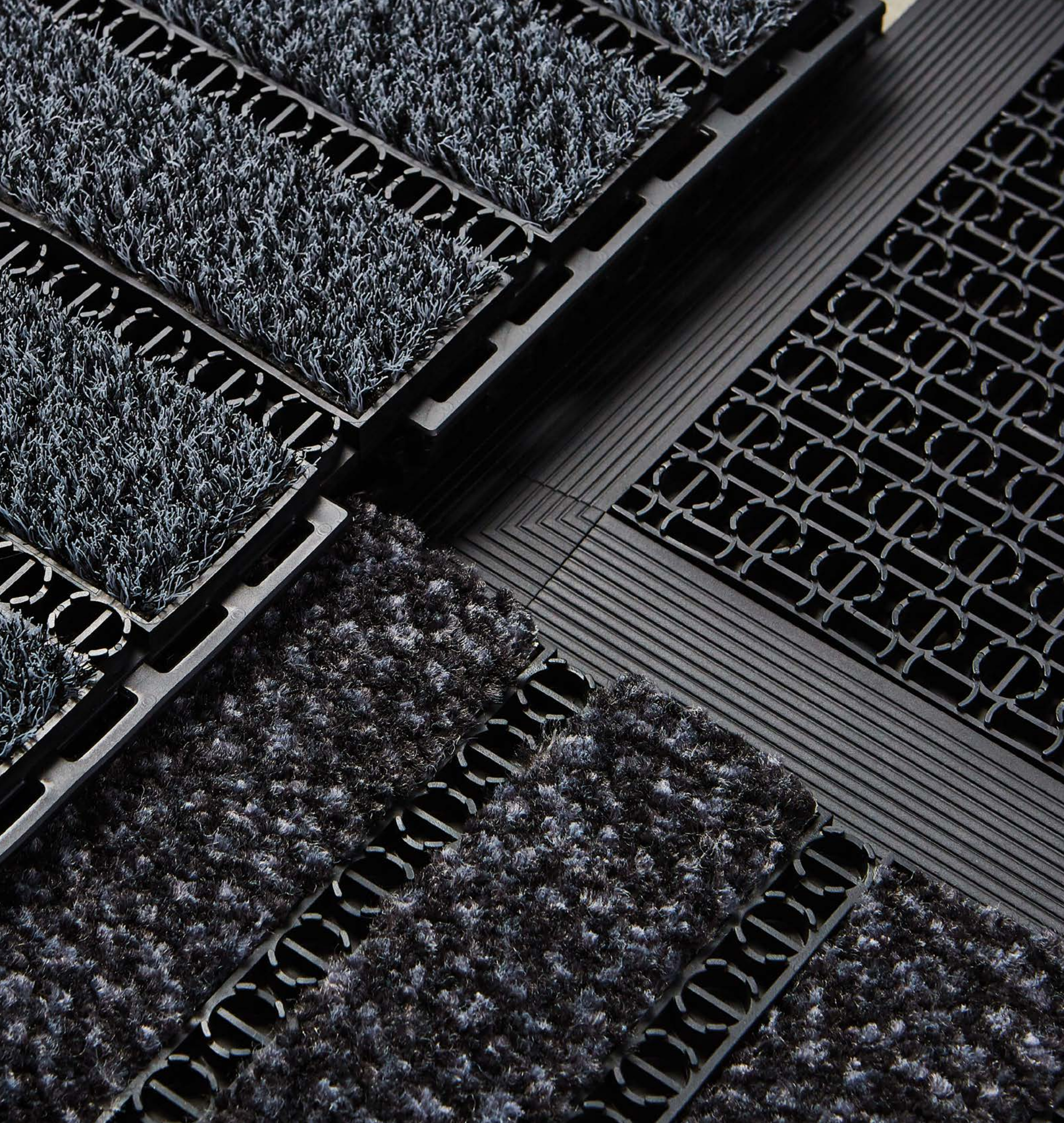


**OBEX™**

Milliken  
**Entrance Flooring**

**GRID**

*Milliken*

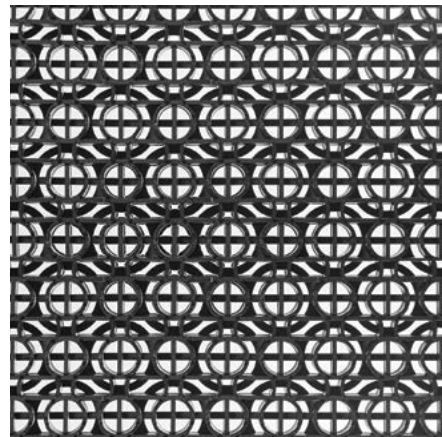


## OBEX™ Grid

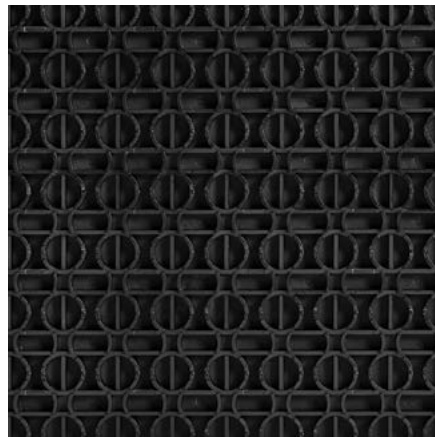
Designed especially for high-traffic areas, OBEX™ Grids provide lasting protection. Available in both open and closed constructions, Grids efficiently capture dirt and moisture from foot and rolled traffic entering the building. Grids are constructed with durable, easy-to-clean vinyl, and allow for OBEX material inserts.



**OBEX™ Vinyl**



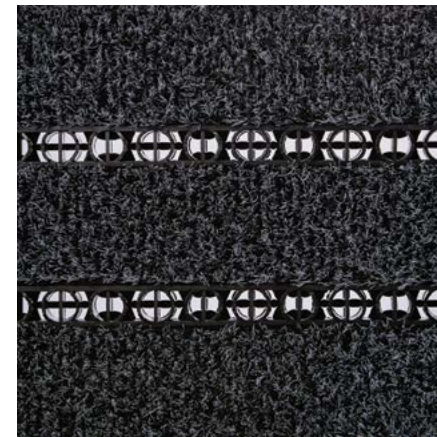
Open



Closed

Open available in 11mm.  
 Closed available in 11mm and 16mm.

**OBEX™ Mono**



Open



Closed

Open available in 11mm.  
 Closed available in 11mm and 16mm.



- ▶ Z1: Grid / Vinyl / Open
- ▶ Z2: Grid / Cut / Closed / Dark Grey
- ▶ Z3: Tile / Cut / Fizz / Dark Grey

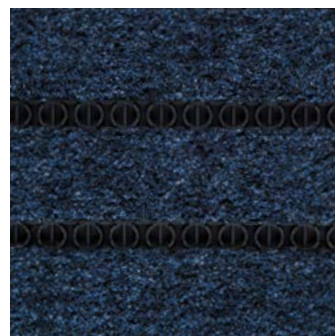
**OBEX™ Cut**



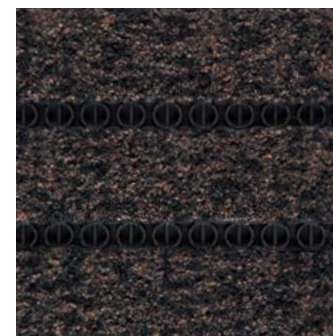
Dark Grey



Grey



Dark Blue



Brown



Red

Open available in 11mm.  
 Closed available in 11mm  
 and 16mm.



Terminal A

Terminal A

Departures  
Baggage claim

Z1: Grid / Vinyl / Open  
Z1: Grid / Mono / Open  
Z3: Tile / CutX / Thread / Grey

# Covering the Zones

## Protection from the Outside In

To determine the most effective OBEX™ solution, our team evaluates your building's entry based on three distinct Zones. This process starts at the outside of the building, and addresses the entire pathway through any airlocks, vestibules, and lobby or reception areas. Because every facility is unique, breaking down these Zones helps define where entrance flooring should be installed, as well as what combinations of Forms and Materials will deliver the best protection and performance.

### ZONE 1 | OUTDOORS

**Location:** Outdoor area prior to building's entrance

**Recommendation:** Product with heavy scraping action

**Goal:** Trap grit, heavy dirt particles, and moisture, including snow, salt, and sand

### ZONE 2 | VESTIBULE / AIRLOCK

**Location:** Enclosed entrance of building

**Recommendation:** Dual-action product that combines scraping and absorption

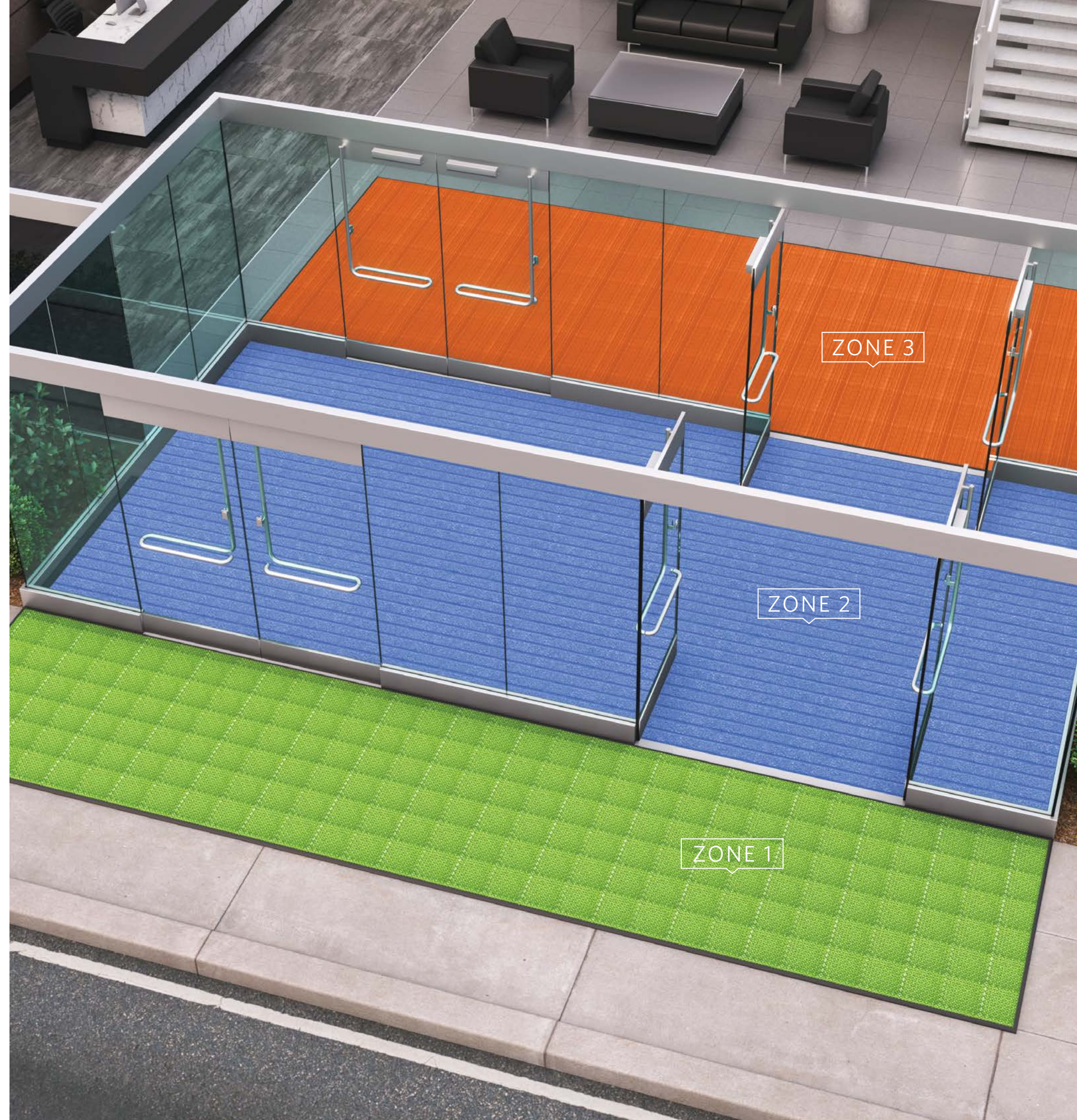
**Goal:** Collect dirt, debris, and moisture

### ZONE 3 | INDOORS

**Location:** Primary area(s) inside building

**Recommendation:** Product with high absorption qualities

**Goal:** Remove remaining moisture and small particles





# Introducing **OBEX VIA**<sup>™</sup>

Our **Variable Installation Approach (VIA)** means you don't have to settle for generic, one-size-fits-all entrance flooring.

OBEX<sup>™</sup> VIA is our site-specific analysis that starts with an assessment of your facility's unique environment, specific needs, and challenges.

We then match your requirements with our offering of effective Forms and industry-proven Materials.

Finally, VIA focuses the conversation on your preferences, resulting in a tailored entrance flooring system that delivers both performance and protection.

- O** **Objective - What do you need your entry to do?**  
Factor in variables such as weather conditions and the intensity of foot, rolled, and heavy cart traffic.
- B** **Barrier Level - Where and to what degree do you need protection?**  
Assess each Zone along the entry pathway, including vestibules, lobbies, and transition areas to determine available linear walk-off distance.
- E** **Enhance - What look and style do you want?**  
Review options for colour and pattern, as well as coordination with interior flooring products and any identity branding you may want.
- X** **Execute**  
Based on your answers to the previous questions, we can now identify and recommend the most effective, customised system of OBEX<sup>™</sup> Forms and Materials.

# Grid Specifications

## OBEX™ VINYL

**Grid Material**  
100% UV-Resistant PVC

**Grid Construction**  
11O: Open  
11C and 16C: Closed

**Total Thickness**  
11 mm  
16 mm

**Grid Size**  
200 mm x 200 mm

**Total Weight**  
11 mm O: 6,750 g/m<sup>2</sup>  
11 mm C: 7,150 g/m<sup>2</sup>  
16 mm C: 9,475 g/m<sup>2</sup>

**Outdoor Temperature Resistance**  
-30° C to 50° C

## OBEX™ MONO

**Grid Material**  
100% UV-Resistant PVC

**Grid Construction**  
11O: Open  
11C and 16C: Closed

**Total Thickness**  
11 mm  
16 mm

**Grid Size**  
200 mm x 200 mm

**Yarn Type**  
ECONYL® Monofilament

**Textile Dye Method**  
Solution Dyed

**Total Weight**  
11 mm O: 8,525 g/m<sup>2</sup>  
11 mm C: 8,755 g/m<sup>2</sup>  
16 mm C: 10,530 g/m<sup>2</sup>

**Outdoor Temperature Resistance**  
-30° C to 50° C

## OBEX™ CUT

**Grid Material**  
100% UV-Resistant PVC

**Grid Construction**  
11O: Open  
11C and 16C: Closed

**Total Thickness**  
11 mm  
16 mm

**Grid Size**  
200 mm x 200 mm

**Yarn Type**  
ECONYL® 100% regenerated polyamide, twisted & heat-set multi/monofilaments dual fibers

**Textile Dye Method**  
DDI (Digital Dye Infusion)

**Total Weight**  
11 mm O: 8,650 g/m<sup>2</sup>  
11 mm C: 8,880 g/m<sup>2</sup>  
16 mm C: 10,655 g/m<sup>2</sup>

# Quick Reference Guide

Form - Material	Zone Application			Dirt/Debris Removal			Moisture Absorption			Installation Approach		
	Z1	Z2	Z3	Good	Better	Best	Good	Better	Best	Recessed	Surface	Wall to Wall
Bar - Mono 11mm	•	•				•				•	•	•
Bar - Mono 16mm	•	•				•				•		
Bar - Cut 11mm		•				•			•	•	•	•
Bar - Cut 16mm		•				•			•	•		
Half Bar - Mono 11mm	•	•				•				•	•	•
Half Bar - Mono 16mm or 22mm	•	•				•				•		
Half Bar - Cut 11mm		•				•			•	•	•	•
Half Bar - Cut 16mm or 22mm		•				•			•	•		
Grid - Vinyl Open 11mm	•				•					•	•	•
Grid - Vinyl Closed 11mm or 16mm		•			•					•	•	•
Grid - Mono Open 11mm	•					•				•	•	•
Grid - Mono Closed 11mm or 16mm		•				•				•	•	•
Grid - Cut Open 11mm		•				•			•	•	•	•
Grid - Cut Closed 11mm or 16mm		•				•			•	•	•	•
Tile - Cut		•	•		•				•	•	•	•
Tile - CutX		•	•			•		•		•	•	•
Tile - Loop		•	•	•				•		•	•	•
Roll - Cut		•	•		•				•	•	•	•
Mat - Mono	•	•				•					•	
Mat - Cut		•	•		•				•		•	



This product has a UL® Environment 3<sup>rd</sup> party verified Environmental Product Declaration (EPD).  
A copy of the EPD is available online at [millikenflooring.com/epd](http://millikenflooring.com/epd) and [productguide.ulenvironment.com](http://productguide.ulenvironment.com).



Milliken's integrated OBEX™ system of Forms and Materials optimises safety, wellness, and design from the outside in.

