



**OBEX™**

Milliken

**Entrance Flooring**

**PRODUCT PORTFOLIO**

*Milliken*

# Contents

<b>Protection that Leads the Way</b>	3
<b>Protect Your Flooring Investment / Distance is Key</b>	5
<b>Covering the Zones</b>	6
<b>Introducing OBEX™ VIA</b>	9
<b>Flooring Innovation</b>	11
<b>Forms</b>	12
<b>Materials</b>	13
<b>OBEX™ Bar</b>	15
<b>OBEX™ Grid</b>	21
<b>OBEX™ Tile</b>	29
<b>OBEX™ Roll</b>	53
<b>OBEX™ Mat</b>	57
<b>About Milliken™</b>	61
<b>Protective Flooring Global Story</b>	62
<b>OBEX™ Quick Reference Guide</b>	64





# Protection that Leads the Way

## OBEX™ Entrance Flooring

Great architecture and design isn't just about managing all that goes into an effective, attractive space. It's also about what's intentionally kept out. That's why the Protective Flooring experts at Milliken™ created OBEX™, a comprehensive entrance system with a range of proven Forms and Materials. OBEX equips architects, engineers, and specifiers with all they need to create site-specific, high-performing entries, without compromising their project's overall design.

- ▶ Z1: Grid / Vinyl / Open
- ▶ Z2: Grid / Vinyl / Closed
- ▶ Z3: Tile / CutX / Fizz / Brown
- ▶ Z3: Tile / Cut / Drift / Brown





# Protect Your Flooring Investment



Without entrance flooring, the foot traffic from 1,500 people can remove **42%** of a floor's finish within the first **2 meters**. (ISSA)



Removing **0.5 kg** of dirt from inside a building costs approximately **\$700**. (ISSA)



**\$1** spent keeping soil out of a building proactively will save **\$10** in soil removal once inside. (Cleaning & Maintenance Management)



**70% to 90%** of the soil entering a facility is "walked in" through the front door, which can total as much as **10 kg** by **1,000 people** when no barrier is installed. (Worldwide Cleaning Association)



Approximately **25,000 people** a day are victims of slip and fall accidents. The expense of these injuries costs organisations **\$3.5 million per hour**—or over **\$30 billion per year** in the United States alone. (U.S. National Safety Council)

# Distance is Key to Stopping Dirt

The goal of any walk-off solution is to safely trap and manage dirt and moisture at the front door.

**40%**

1.8 METERS OF ENTRY PRODUCT **STOPS 40% OF DIRT**

**80%**

6 METERS OF ENTRY PRODUCT **STOPS 80% OF DIRT**

**98%**

12 METERS OF ENTRY PRODUCT **STOPS 98% OF DIRT**

Source: The Carpet and Rug Institute, Inc.

A target of seven to ten meters is achievable with a strategic Zone approach, keeping in mind the intensity of foot, rolled, and heavy cart traffic.



# Covering the Zones

## Protection from the Outside In

To determine the most effective OBEX™ solution, our team evaluates your building's entry based on three distinct Zones. This process starts at the outside of the building, and addresses the entire pathway through any airlocks, vestibules, and lobby or reception areas. Because every facility is unique, breaking down these Zones helps define where entrance flooring should be installed, as well as what combinations of Forms and Materials will deliver the best protection and performance.

### ZONE 1 | OUTDOORS

**Location:** Outdoor area prior to building's entrance

**Recommendation:** Product with heavy scraping action

**Goal:** Trap grit, heavy dirt particles, and moisture, including snow, salt, and sand

### ZONE 2 | VESTIBULE / AIRLOCK

**Location:** Enclosed entrance of building

**Recommendation:** Dual-action product that combines scraping and absorption

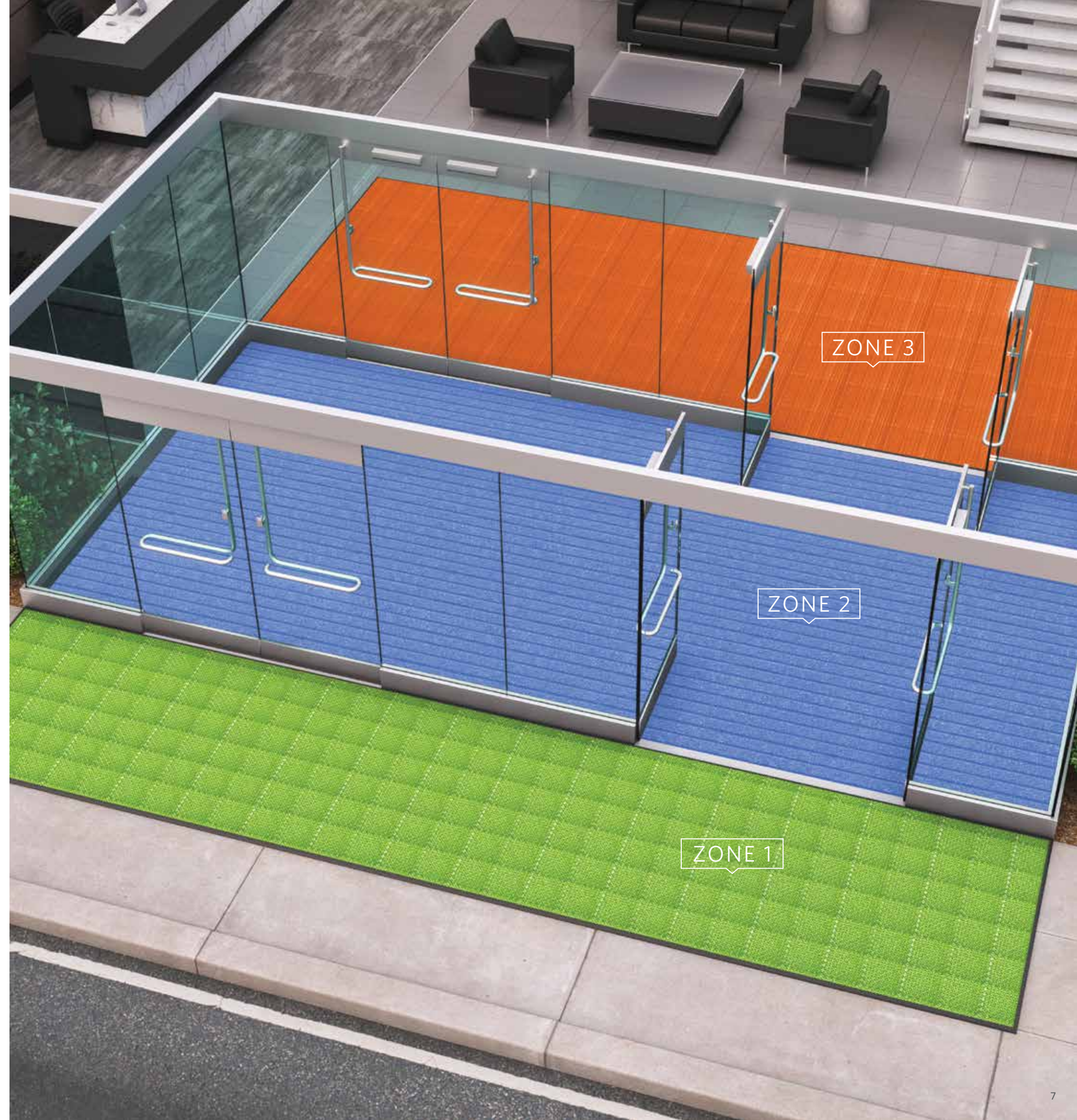
**Goal:** Collect dirt, debris, and moisture

### ZONE 3 | INDOORS

**Location:** Primary area(s) inside building

**Recommendation:** Product with high absorption qualities

**Goal:** Remove remaining moisture and small particles







# Introducing **OBEX VIA**<sup>™</sup>

Our **Variable Installation Approach (VIA)** means you don't have to settle for generic, one-size-fits-all entrance flooring.

OBEX<sup>™</sup> VIA is our site-specific analysis that starts with an assessment of your facility's unique environment, specific needs, and challenges.

We then match your requirements with our offering of effective Forms and industry-proven Materials.

Finally, VIA focuses the conversation on your preferences, resulting in a tailored entrance flooring system that delivers both performance and protection.

- O** **Objective - What do you need your entry to do?**  
Factor in variables such as weather conditions and the intensity of foot, rolled, and heavy cart traffic.
- B** **Barrier Level - Where and to what degree do you need protection?**  
Assess each Zone along the entry pathway, including vestibules, lobbies, and transition areas to determine available linear walk-off distance.
- E** **Enhance - What look and style do you want?**  
Review options for colour and pattern, as well as coordination with interior flooring products and any identity branding you may want.
- X** **Execute**  
Based on your answers to the previous questions, we can now identify and recommend the most effective, customised system of OBEX<sup>™</sup> Forms and Materials.



# Flooring Innovation

## Smarter, Better Entries

Rooted in the long history of Milliken™ innovation and reflecting the organisation's bold vision for healthy, efficient, and productive facilities, OBEX™ leads the way with proven options for the harshest conditions, without the unattractive, unsophisticated compromises typically associated with entries. By keeping out unwanted debris

and moisture, OBEX Entrance Flooring protects spaces against slips and falls, unhealthy contaminants, and abrasive particles that can prematurely wear facility-wide flooring. From Grids, Tiles, and aluminum Bars to Mats and Rolls, Milliken's integrated OBEX system optimises safety, wellness, and design from the outside in.

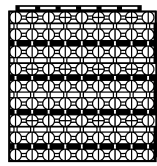




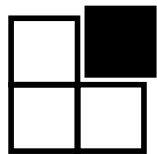
# Forms



**OBEX™ Bar:** Combining a click-in system with high-performance inserts, our aluminum Bars offer built-in sound insulation and options for recessed or surface-mounted installation.



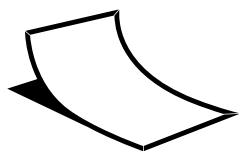
**OBEX™ Grid:** Designed especially for high-traffic areas, Grids provide a first line of defense to efficiently stop dust, dirt, and moisture from entering a building.



**OBEX™ Tile:** With cut-pile (open) and loop-pile (closed) textile options in multiple patterns and colours, Tiles offer high-performance dirt and moisture collection plus tailored design.

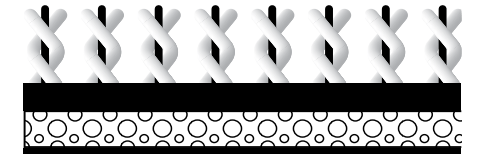


**OBEX™ Roll:** Coordinating with OBEX™ Tiles, Rolls provide seamless protection within the interior space.

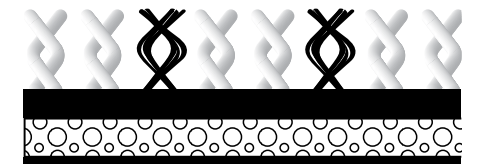


**OBEX™ Mat:** Suitable for both indoor and outdoor applications, Mats couple placement flexibility with high performance.

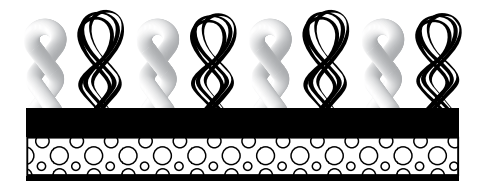
# Materials



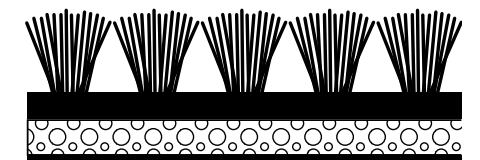
**OBEX™ Cut:** A twisted and heat-set combination of multifilament nylon yarns and monofilament scrapers for successful removal of moisture, damaging particles, and pollutants.



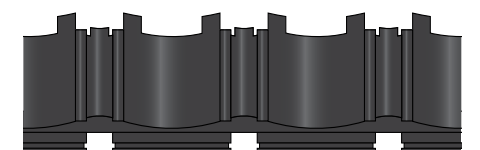
**OBEX™ CutX:** A more aggressive version of our Cut textile, CutX contains extra monofilament fibers for successful removal of moisture, damaging particles, and pollutants.



**OBEX™ Loop:** This resilient, solution-dyed textile with a loop-pile construction absorbs moisture while maintaining its appearance.



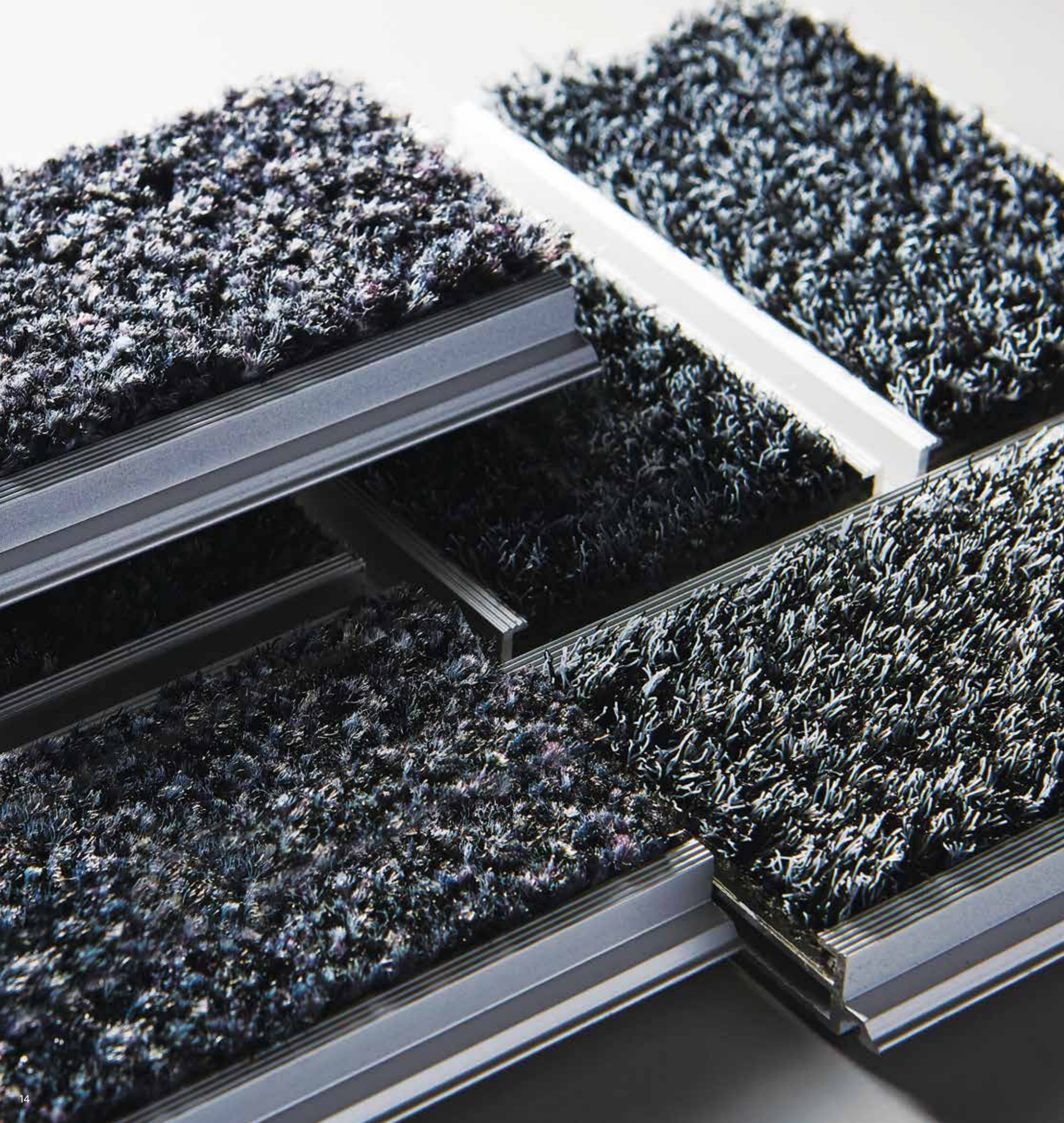
**OBEX™ Mono:** Strong monofilament fibers use superior brushing action to capture debris.



**OBEX™ Vinyl:** Low-maintenance, easy-to-clean, and durable, Vinyl provides a first line of scraping defense against outside elements.







## OBEX™ Bar

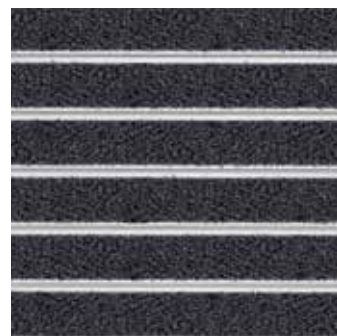
OBEX™ Bars are designed with a unique aluminum click-in system for simple installation directly on premises. Bars can be cut to fit any application—whether surface mounted on the floor or installed in recessed mat wells. Bars feature our Cut textile or Monofilament inserts with added backing for built-in sound insulation.





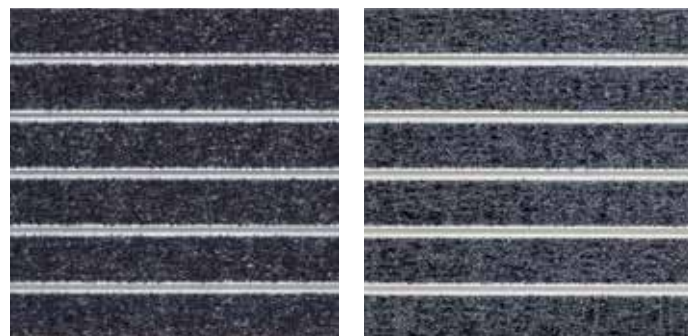
▶ Z2: Bar / Mono  
▶ Z3: Bar / Cut / Dark Grey

**OBEX™ Mono**



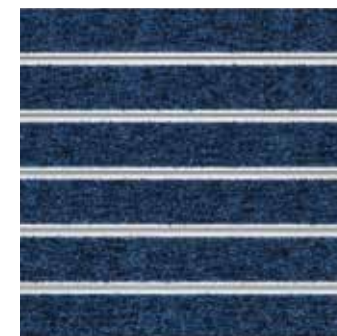
Grey

**OBEX™ Cut**



Dark Grey

Grey



Dark Blue



Brown



Red

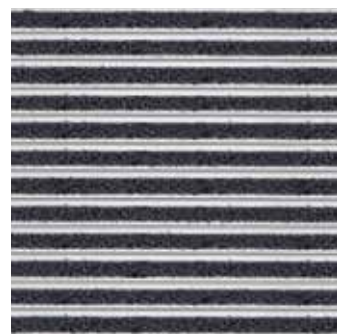
Available in  
11mm and  
16mm.





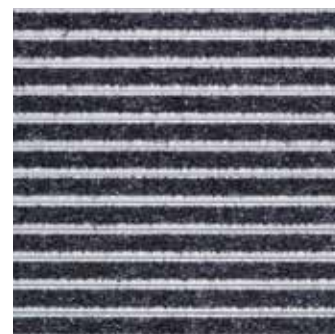
- ▶ Z1: Half Bar / Mono / Dark Grey
- ▶ Z2: Tile / CutX / Fizz / Dark Grey
- ▶ Z3: Mat / Cut / Galaxy / Dark Grey

**OBEX™ Mono | Half Bar**

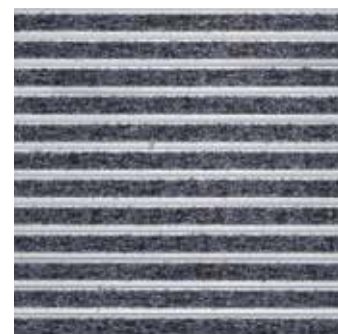


Grey

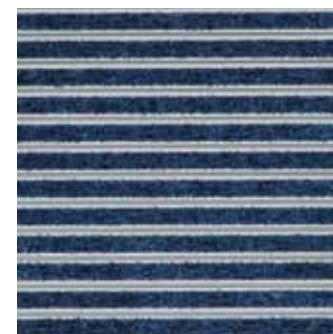
**OBEX™ Cut | Half Bar**



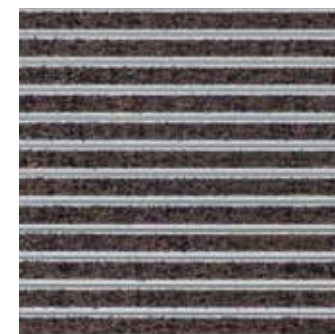
Dark Grey



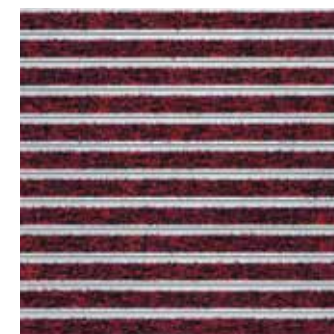
Grey



Dark Blue



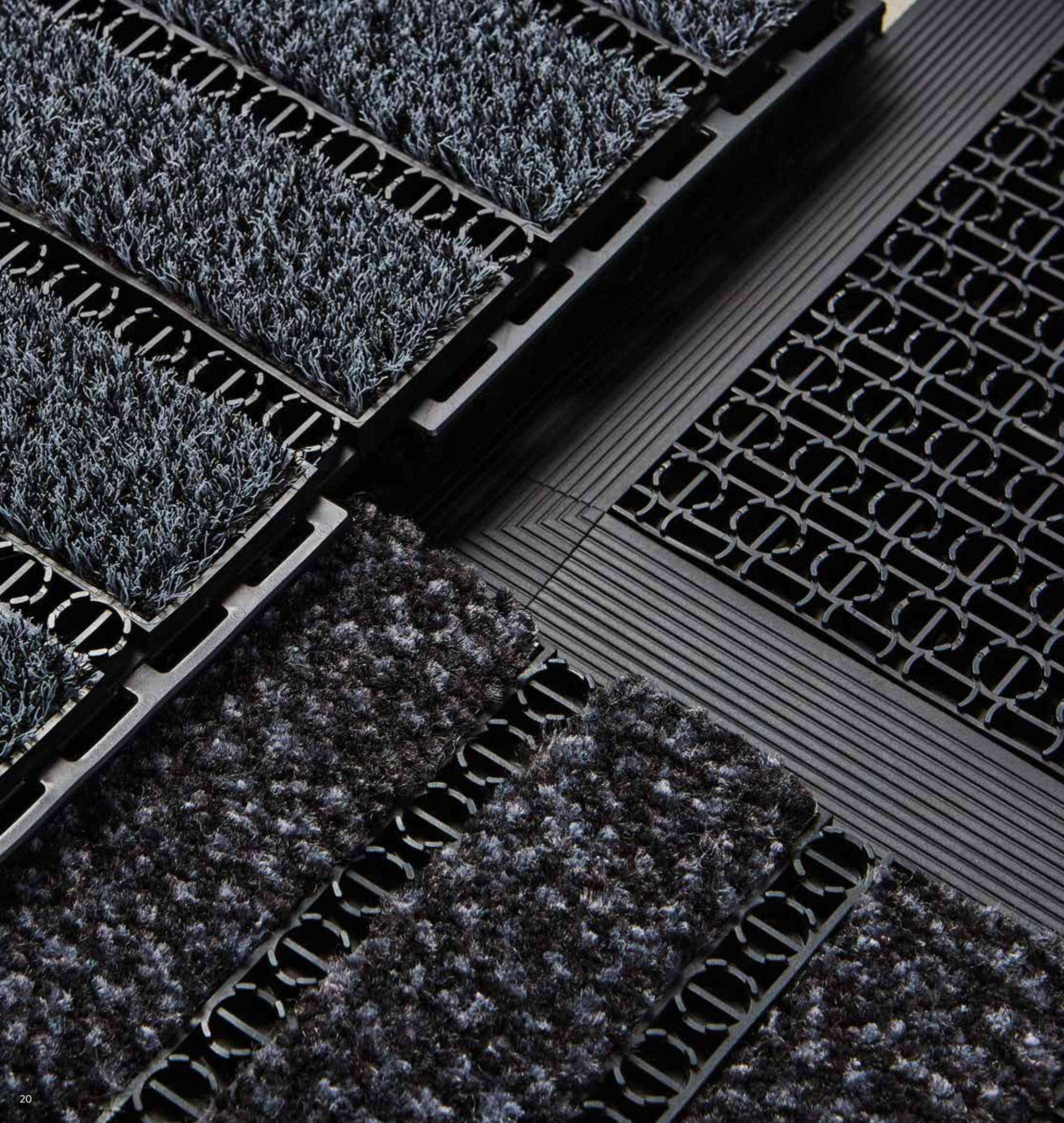
Brown



Red

Available in 11mm, 16mm and 22mm.





## OBEX™ Grid

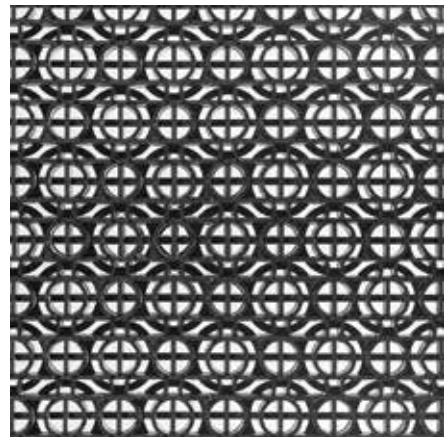
Designed especially for high-traffic areas, OBEX™ Grids provide lasting protection. Available in both open and closed constructions, Grids efficiently capture dirt and moisture from foot and rolled traffic entering the building. Grids are constructed with durable, easy-to-clean vinyl, and allow for OBEX material inserts.



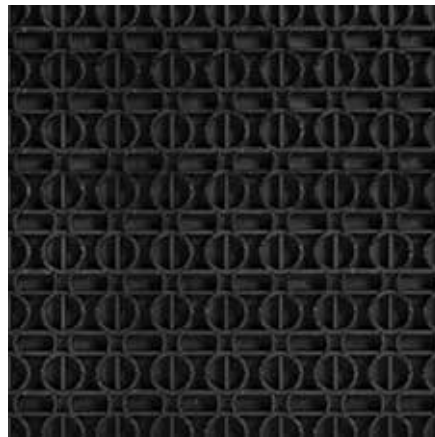


Z1: Grid / Mono / Open  
 Z2: Tile / Cut / Drift / Dark Blue

**OBEX™ Vinyl**



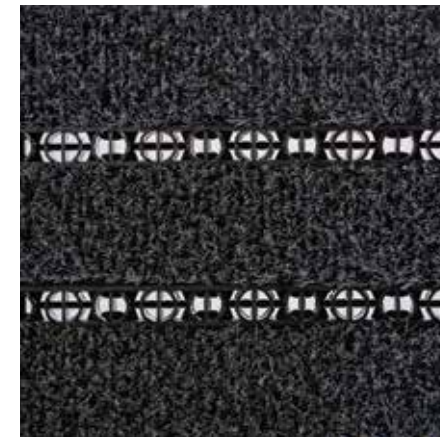
Open



Closed

Open available  
 in 11mm.  
 Closed available  
 in 11mm and 16mm.

**OBEX™ Mono**



Open



Closed

Open available  
 in 11mm.  
 Closed available  
 in 11mm and 16mm.





- ▶ Z1: Grid / Vinyl / Open
- ▶ Z2: Grid / Cut / Closed / Dark Grey
- ▶ Z3: Tile / Cut / Fizz / Dark Grey

**OBEX™ Cut**



Dark Grey



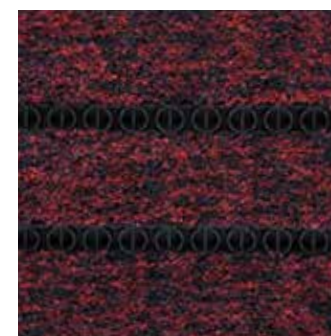
Grey



Dark Blue



Brown



Red

Open available in 11mm.  
 Closed available in 11mm  
 and 16mm.





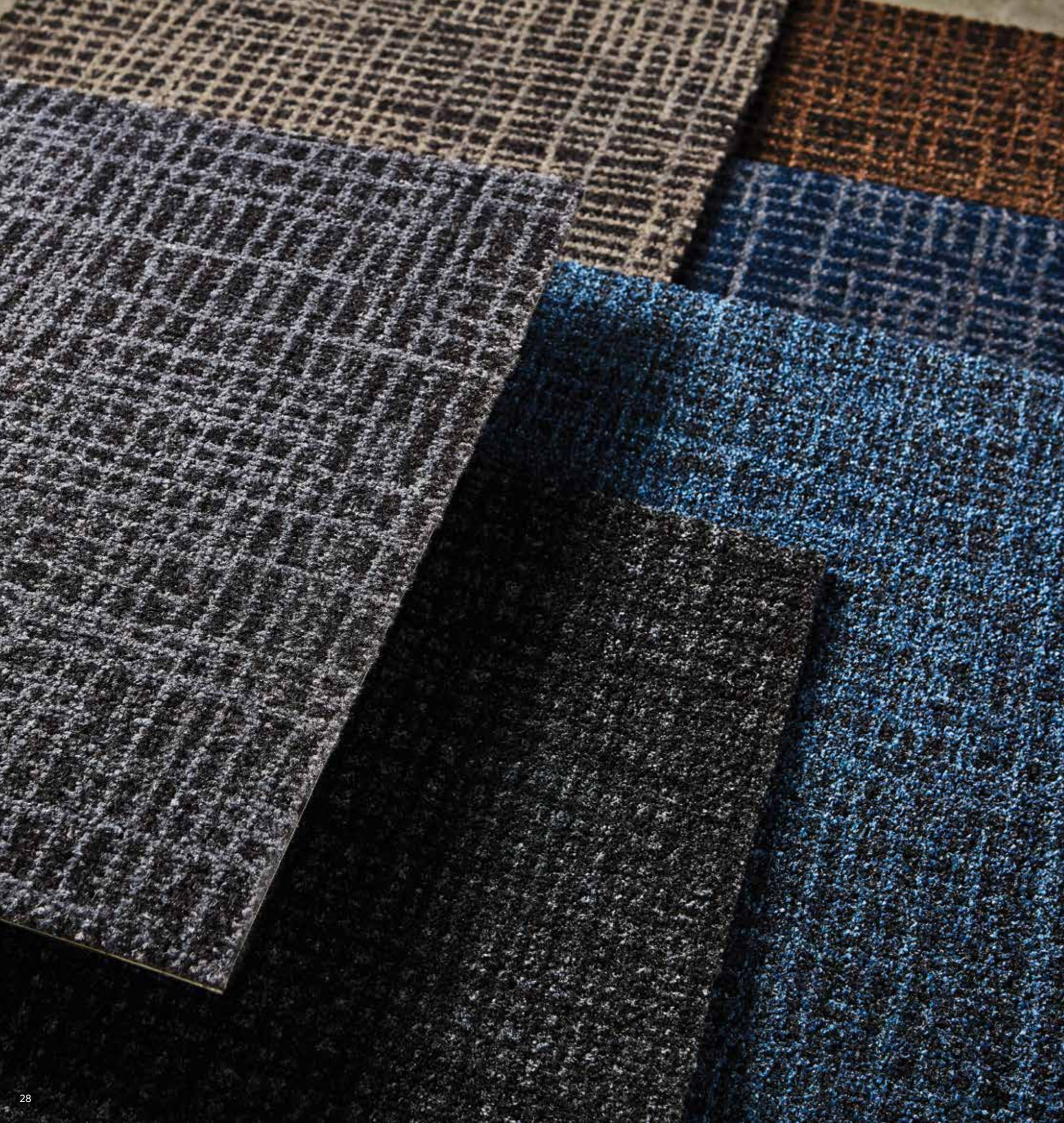
Terminal A

Terminal A

Departures  
Baggage claim







## OBEX™ Tile

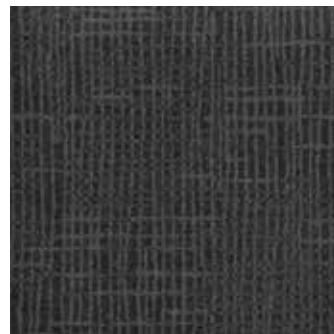
With cut-pile (open) and loop-pile (closed) textile options in multiple patterns and colours, OBEX™ Tiles offer high-performance dirt and moisture collection plus tailored design. All Tiles feature our industry-exclusive cushion backing designed to deliver underfoot comfort, improved acoustics, and moisture management.



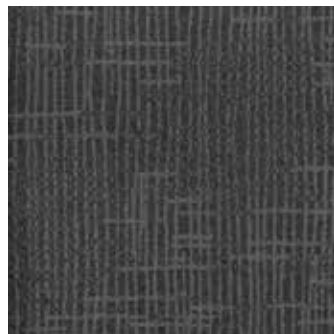


▶ Z1: Grid / Vinyl / Open  
 ▶ Z3: Tile / Cut / Cross / Grey

**OBEX™ Cut | Cross**



Dark Grey



Grey



Dark Blue



Brown



Red





- ▶ Z1: Grid / Mono / Open
- ▶ Z2: Grid / Cut / Closed / Red
- ▶ Z3: Tile / Cut / Drift / Red

**OBEX™ Cut | Drift**



Dark Grey



Grey



Dark Blue



Brown



Red



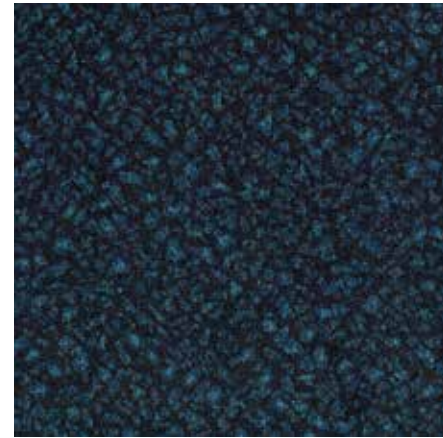
OBEX™ Cut | Fizz



Dark Grey



Grey



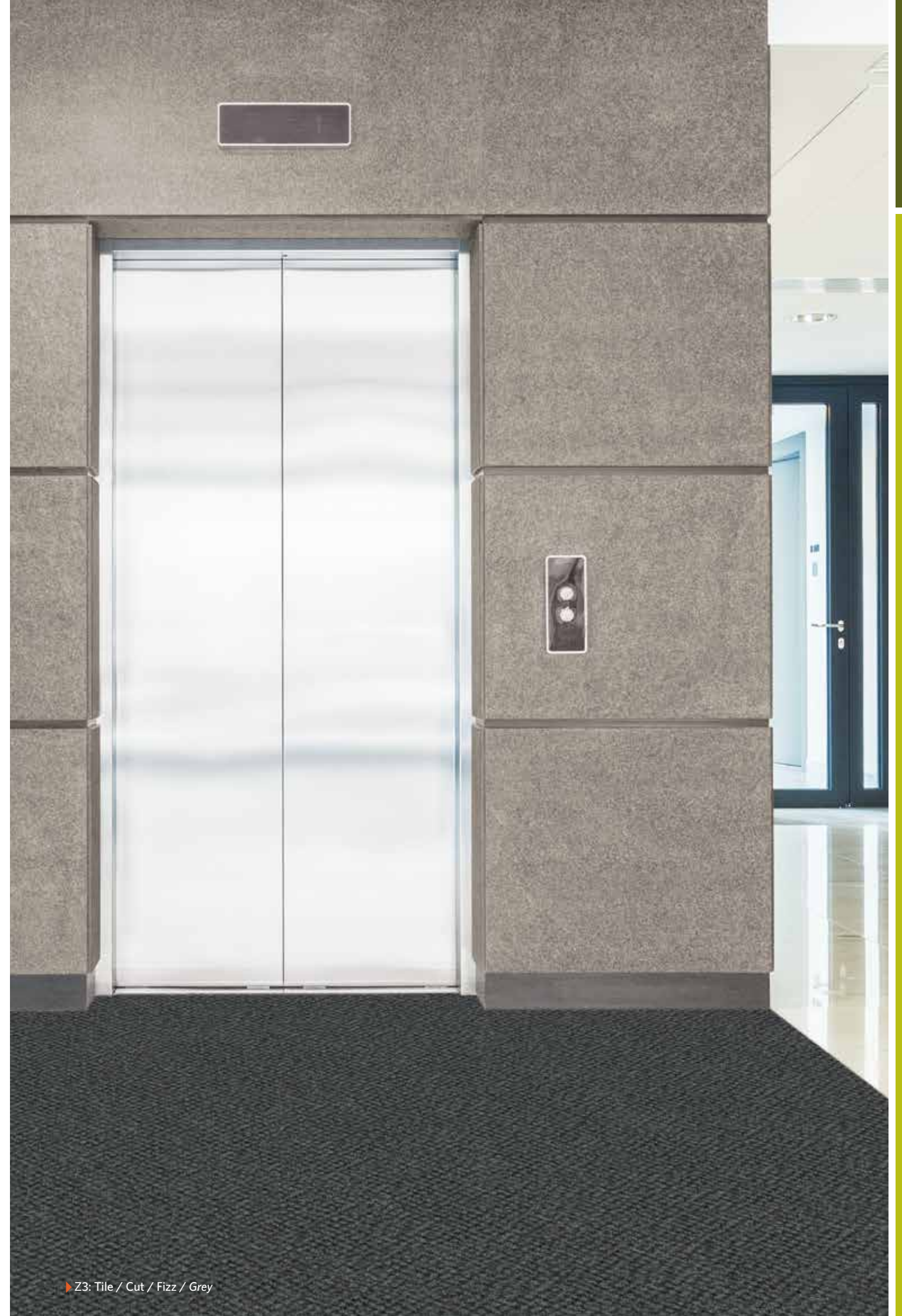
Dark Blue



Brown



Red



▶ Z3: Tile / Cut / Fizz / Grey





▶ Z3: Tile / Cut / Strum / Brown

**OBEX™ Cut | Strum**



Dark Grey



Grey



Dark Blue



Brown



Red



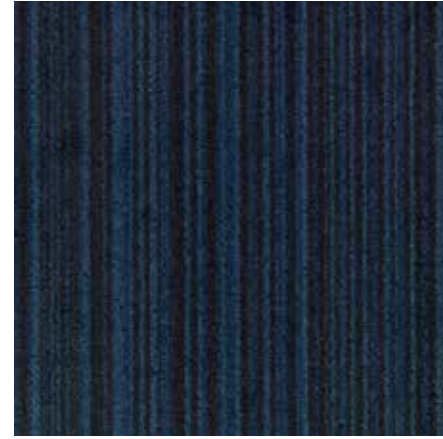
OBEX™ Cut | Thread



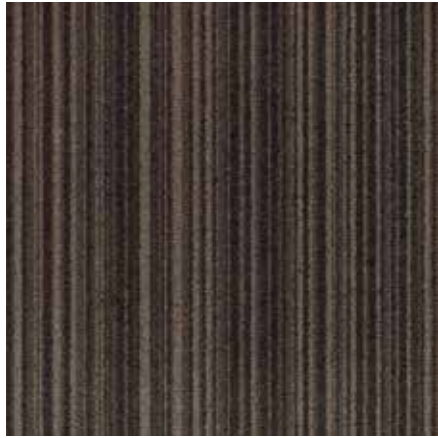
Dark Grey



Grey



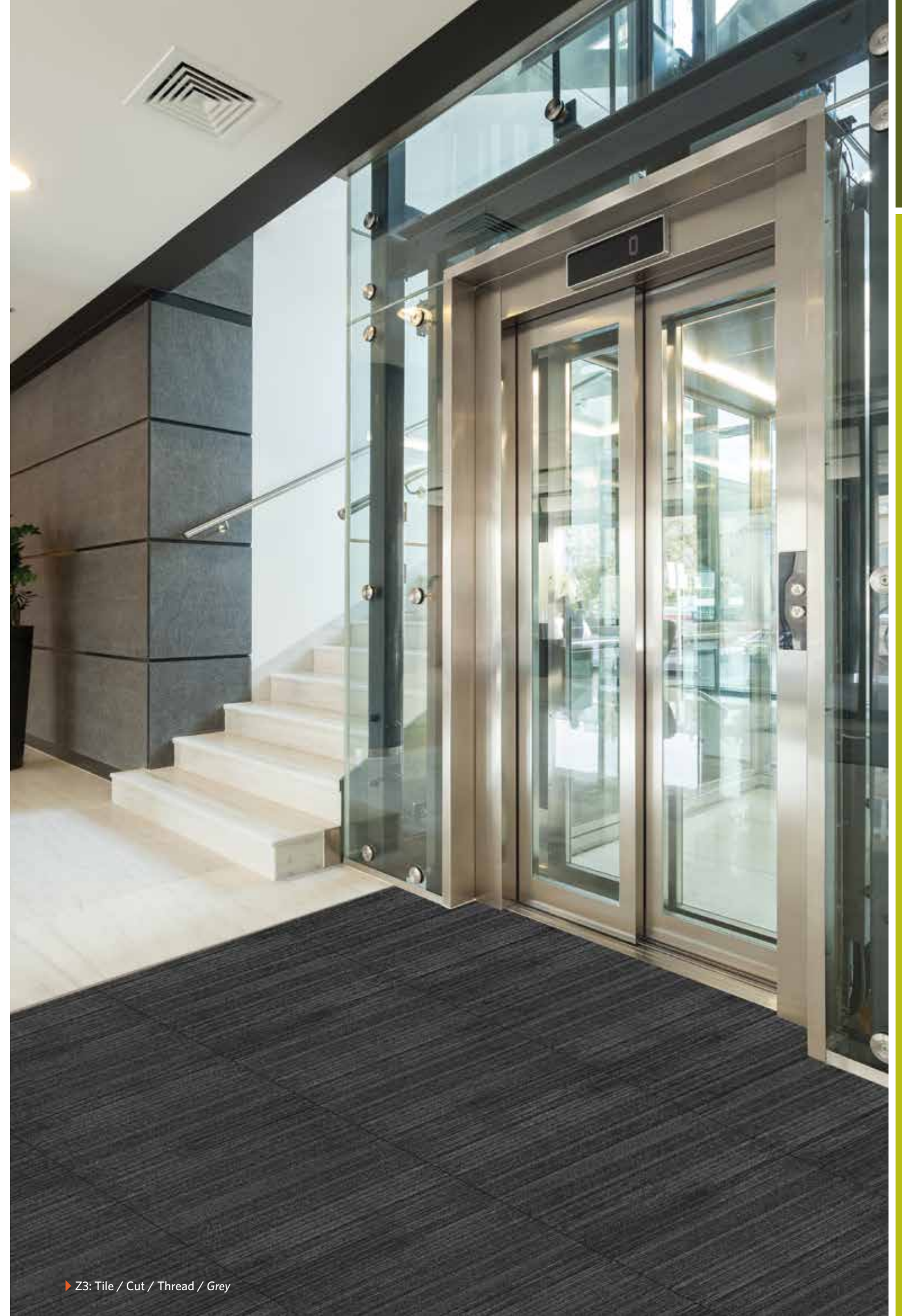
Dark Blue



Brown



Red







▶ Z2: Bar / Cut / Red  
 ▶ Z3: Tile / CutX / Cross / Red

**OBEX™ CutX | Cross**



Dark Grey



Grey



Dark Blue



Brown



Red





▶ Z1: Grid / Vinyl / Open  
▶ Z3: Tile / CutX / Drift / Dark Blue

**OBEX™ CutX | Drift**



Dark Grey



Grey



Dark Blue



Brown



Red





▶ Z1: Grid / Vinyl / Open  
▶ Z3: Tile / CutX / Fizz / Brown

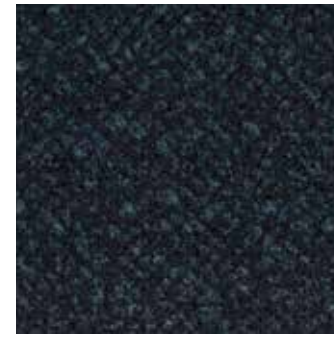
**OBEX™ CutX | Fizz**



Dark Grey



Grey



Dark Blue



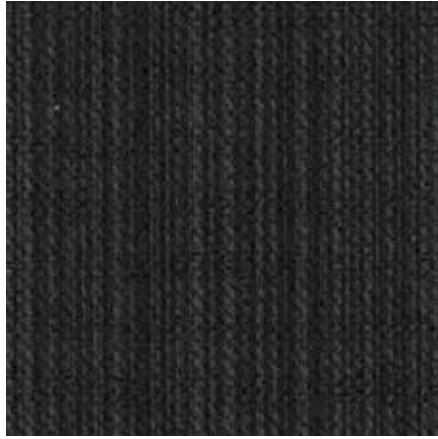
Brown



Red



OBEX™ CutX | Thread



Dark Grey



Grey



Dark Blue



Brown



Red



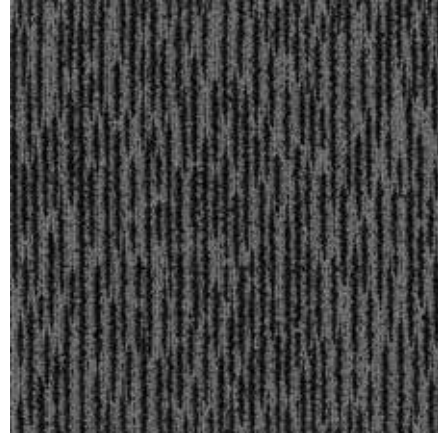
▶ Z3: Tile / CutX / Thread / Dark Grey



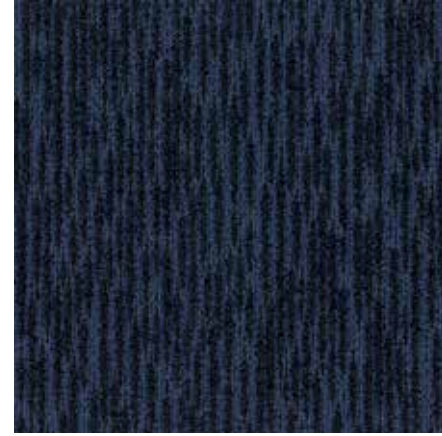
OBEX™ Loop | Bark



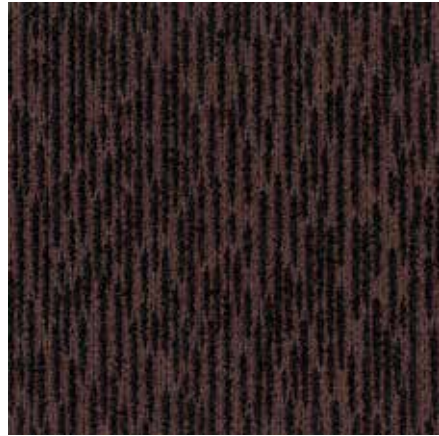
Dark Grey



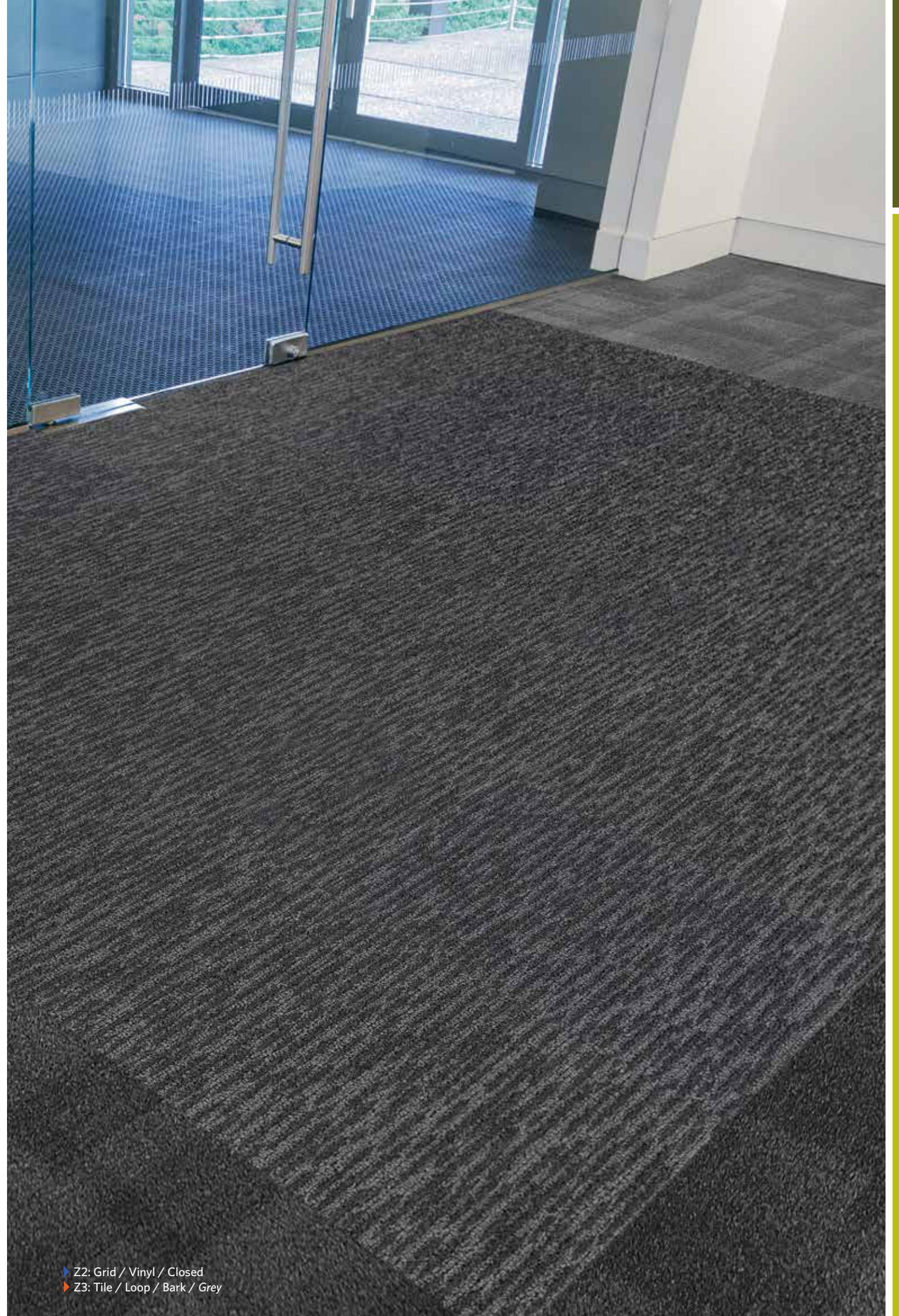
Grey



Dark Blue

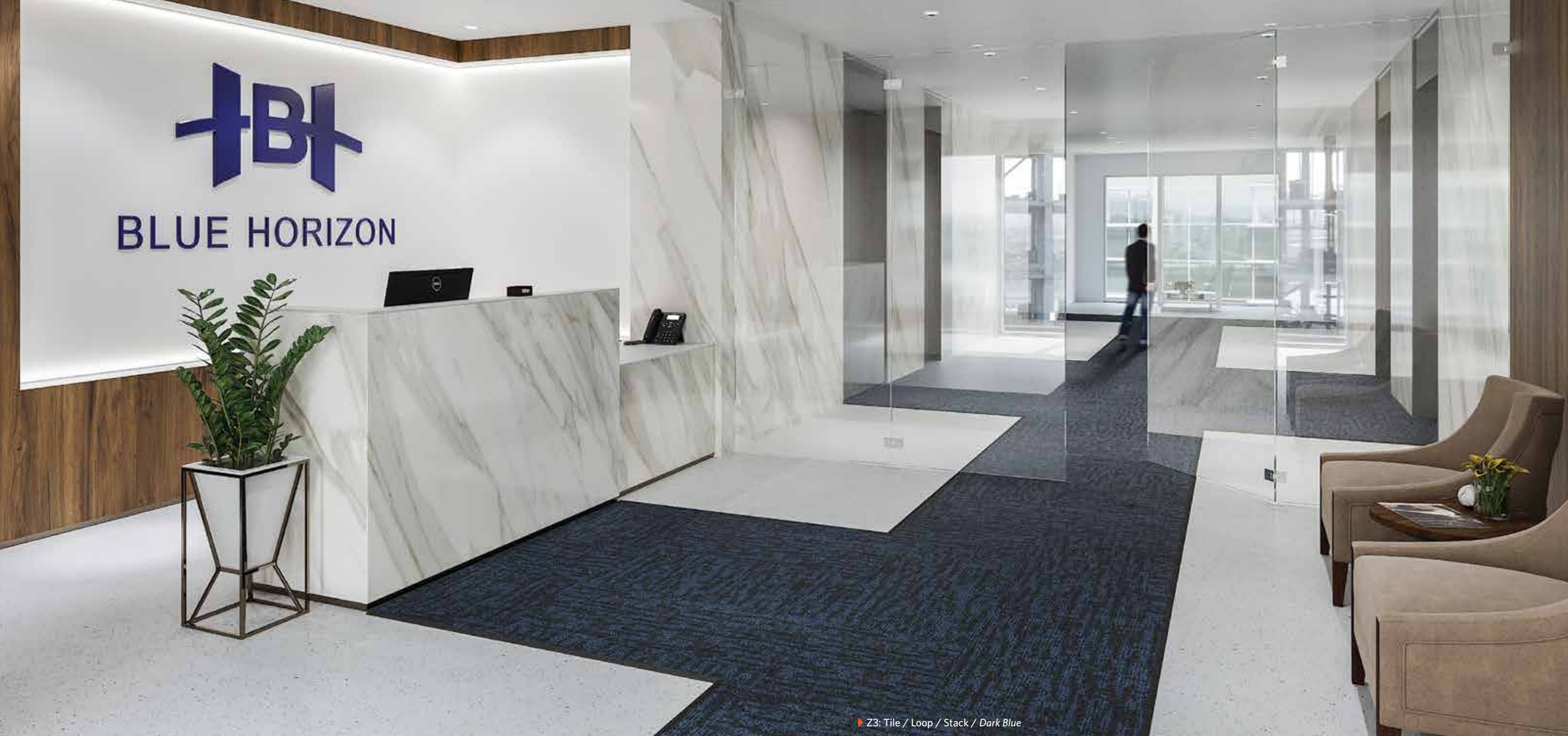


Brown



▶ Z2: Grid / Vinyl / Closed  
▶ Z3: Tile / Loop / Bark / Grey





▶ Z3: Tile / Loop / Stack / Dark Blue

**OBEX™ Loop | Stack**



Dark Grey



Grey



Dark Blue



Brown





## OBEX™ Roll

Featuring a durable vinyl backing with multiple colour options, OBEX™ Rolls allow for seamless transitions into hallways and larger spaces. Rolls can be cut to produce runners or installed wall-to-wall, protecting against dirt and moisture in high-traffic areas and heavy commercial use.



OBEX™ Cut | Galaxy



Dark Grey



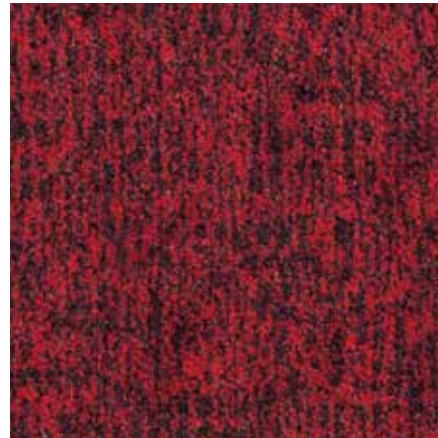
Grey



Dark Blue



Brown



Red



▶ Z3: Roll / Cut / Galaxy / Grey

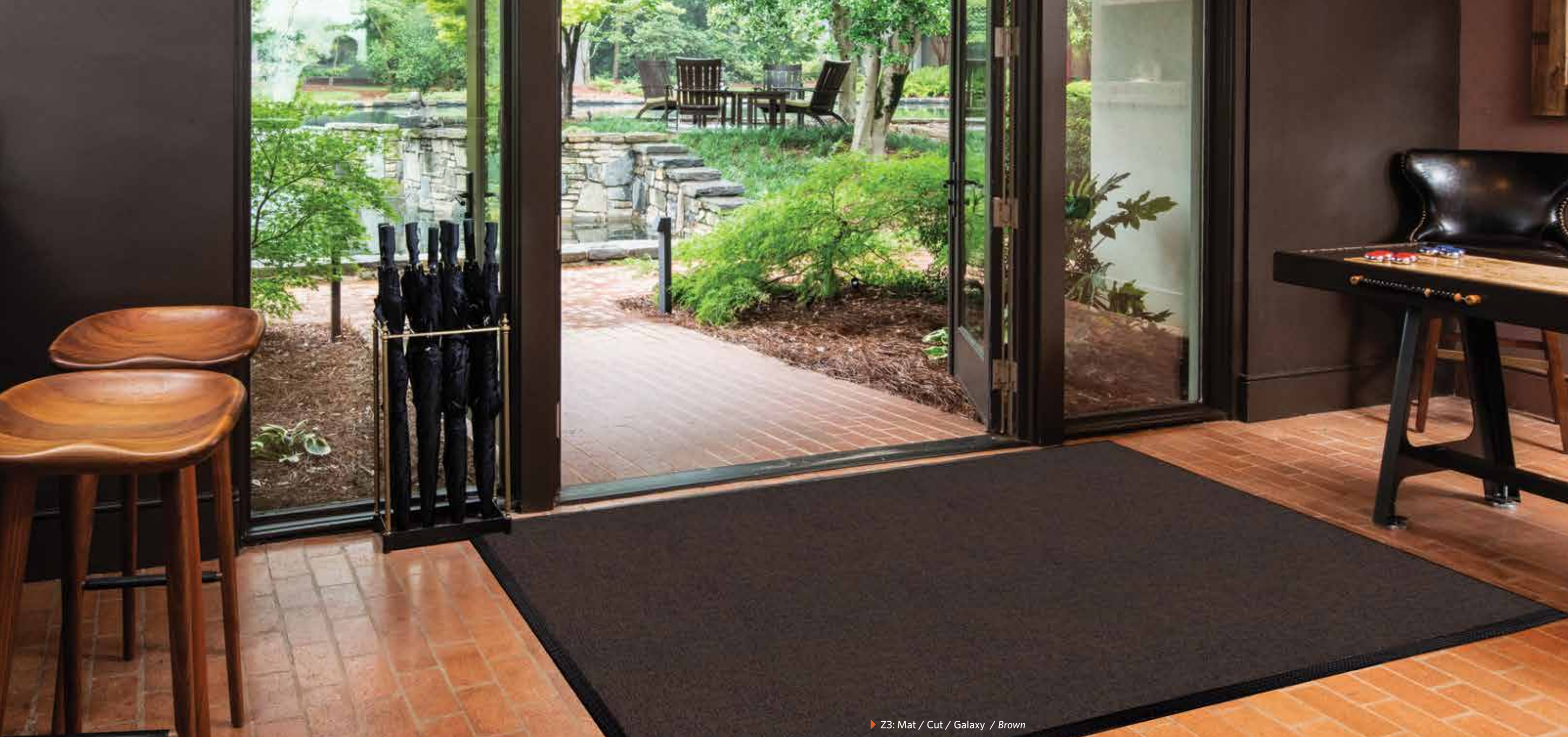




## OBEX™ Mat

OBEX™ Mats combine protection with flexibility. Whether applied as a primary barrier system or as a temporary, loose-laid option when additional protection is needed, Mats capture fine dirt, larger particles, and moisture.





▶ Z3: Mat / Cut / Galaxy / Brown

**OBEX™ Mono**



Grey

**OBEX™ Cut | Galaxy**



Dark Grey



Grey



Dark Blue



Brown



Red





Build for the Future

“Operational excellence secures the present. Innovation excellence secures the future.”

*Roger Milliken*

milliken

# About Milliken™

By combining science and design with inspiration and insight, Milliken™ tackles the issues and concerns of today and tomorrow. Our community of innovators is invigorated by the challenge of finding creative ways to enhance people’s lives and make the world around us easier, safer, more sustainable, and more beautiful.

At Milliken, we’ve always believed prosperity and responsibility must coexist—so we conduct business with a higher purpose and a longer-term view. As such, we are guided by three values: **Ethics, Excellence, and Leadership.**



Milliken™ has been recognised as one of the world’s most ethical companies by Ethisphere™ Magazine every year since the first list in 2007.





# Our Global Story

Performance that Protects

Protective Flooring, part of the larger Floor Covering Division at Milliken™, provides premium entrance flooring solutions and transitional textile matting for public and commercial buildings. The group's high-performance offering incorporates the breakthrough technologies and textiles long associated with Milliken, available in three complementary, integrated categories: OBEX™ Entrance Flooring, D2™ Convertible Flooring™ and Mats.

Backed by manufacturing facilities in the US, Europe, and Asia, our dedicated sales and customer service teams deliver unparalleled support to customers around the globe. Our passion, however, is about more than creating and servicing the highest-quality, most innovative flooring products in the industry. Our entire team is genuinely committed to enhancing the safety, comfort, health, and wellness of those who interact with our products every day.

## Showrooms

- 1 Spartanburg, SC, USA
- 2 Chicago, IL, USA
- 3 New York, NY, USA
- 4 San Francisco, CA, USA
- 5 Wigan, UK
- 6 London, UK
- 7 Paris, France
- 8 Sydney, Australia
- 9 Beijing, China
- 10 Shanghai, China

## Manufacturing Locations

- 1 Georgia, USA
- 2 Middleton, UK
- 3 Shanghai, China

Milliken™  
Protective Flooring





# Quick Reference Guide

Form - Material	Zone Application			Dirt/Debris Removal			Moisture Absorption			Installation Approach		
	Z1	Z2	Z3	Good	Better	Best	Good	Better	Best	Recessed	Surface	Wall to Wall
Bar - Mono 11mm	•	•				•				•	•	•
Bar - Mono 16mm	•	•				•				•		
Bar - Cut 11mm		•				•			•	•	•	•
Bar - Cut 16mm		•				•			•	•		
Half Bar - Mono 11mm	•	•				•				•	•	•
Half Bar - Mono 16mm or 22mm	•	•				•				•		
Half Bar - Cut 11mm		•				•			•	•	•	•
Half Bar - Cut 16mm or 22mm		•				•			•	•		
Grid - Vinyl Open 11mm	•				•					•	•	•
Grid - Vinyl Closed 11mm or 16mm		•			•					•	•	•
Grid - Mono Open 11mm	•					•				•	•	•
Grid - Mono Closed 11mm or 16mm		•				•				•	•	•
Grid - Cut Open 11mm		•				•			•	•	•	•
Grid - Cut Closed 11mm or 16mm		•				•			•	•	•	•
Tile - Cut		•	•		•				•	•	•	•
Tile - CutX		•	•			•		•		•	•	•
Tile - Loop		•	•	•				•		•	•	•
Roll - Cut		•	•		•				•	•	•	•
Mat - Mono	•	•				•					•	
Mat - Cut		•	•		•				•		•	



# Protection that Leads the Way



At Milliken™, total satisfaction is our promise, which is why exceptional support from start to finish is our standard. From the initial sample request to your first lead-time inquiry, our commitment to service begins immediately and continues throughout the life of every product that bears the Milliken name.

To discuss the OBEX™ range further, or to place your order, please contact our Protective Flooring Customer Service team at +8621 6145 5555 or [OBEXsupport@milliken.com](mailto:OBEXsupport@milliken.com).