

THE NEW *Milliken*[®] **HOSPITALITY**





DIGITAL
DYE
INFUSION

RIGIDFORM™
LVT

AXMINSTER

COLORPOINT™

THE NEW *Milliken* HOSPITALITY

FORCE *of* NATURE



FORCE *of* NATURE

Natural phenomena continually shape and reshape our planet. Weather, erosion, biological processes, tidal flow, volcanic eruptions and earthquakes are just a few of the natural events that inspired our Force of Nature Collection.

Four patterns attempt to capture the beauty and mystery of these forces – Floral Trace, Drip, Smoke and Reflection.

4 New Collections in AX|CYP|DDI



The image shows a decorative floor with a repeating diamond or herringbone pattern. Each diamond is filled with a detailed, natural wood grain texture, while the lines between them are a solid, dark charcoal grey. Four light-colored wooden stools with circular tops are arranged in a row across the top of the frame. In the upper right corner, there are lush green ferns. A semi-transparent grey banner is positioned across the top left, containing the text 'Drip - Digital Dye Infusion'.

Drip - Digital Dye Infusion

Reflection - Digital Dye Infusion



Smoke - ColorPoint CYP



Floral Trace - Axminster





Floral Trace — The simplicity of a silhouette; the intricacy of natural forms.



FLORAL TRACE : Axminster



FLORAL TRACE : ColorPoint CYP



FLORAL TRACE : Digital Dye Infusion



FLORAL TRACE





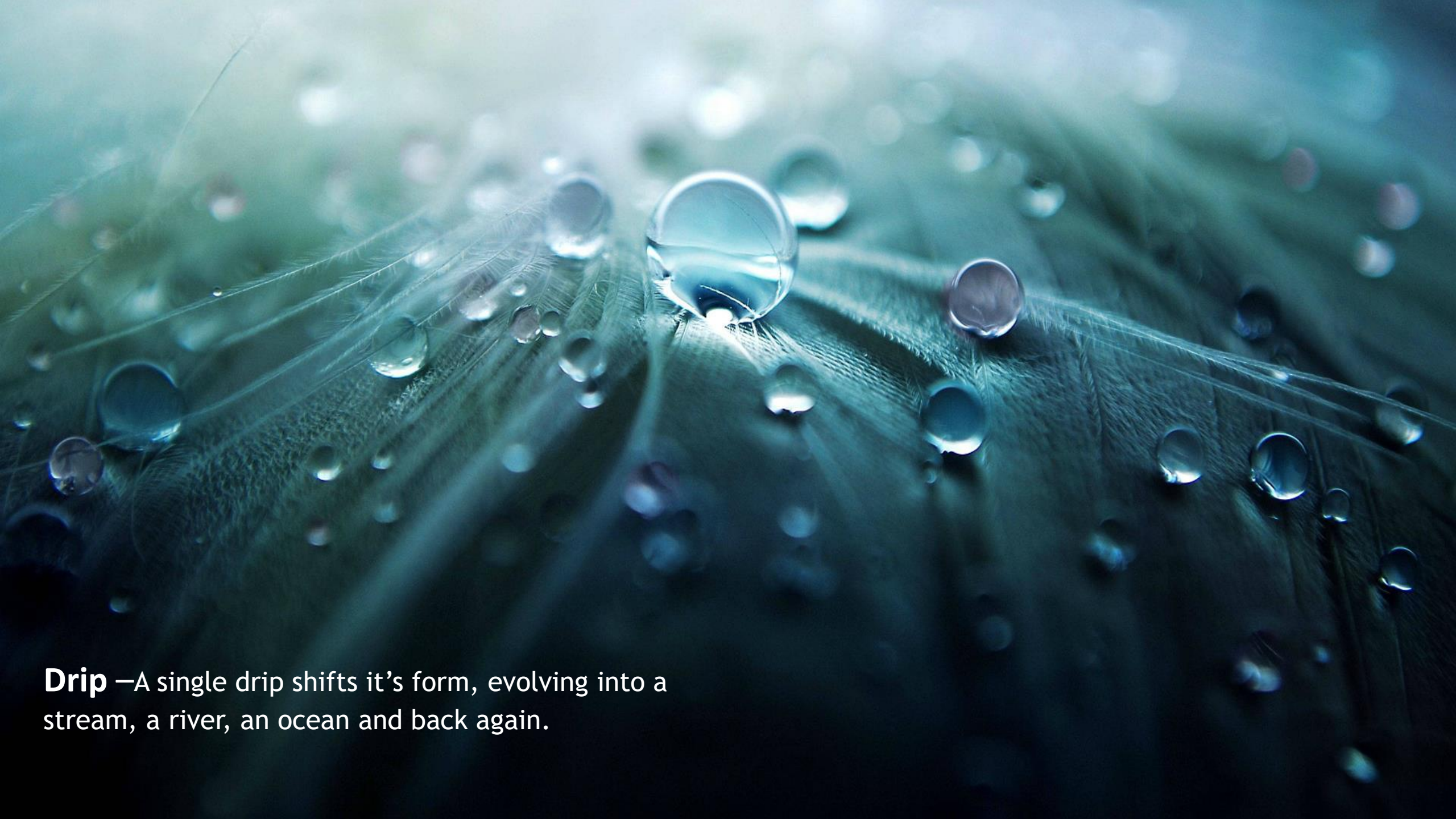
Reflection — Landscape cast in shadow, a flash of color. A reminder of the beauty of the world around us.

REFLECTION



REFLECTION





Drip —A single drip shifts it's form, evolving into a stream, a river, an ocean and back again.


DRIP





DRIP



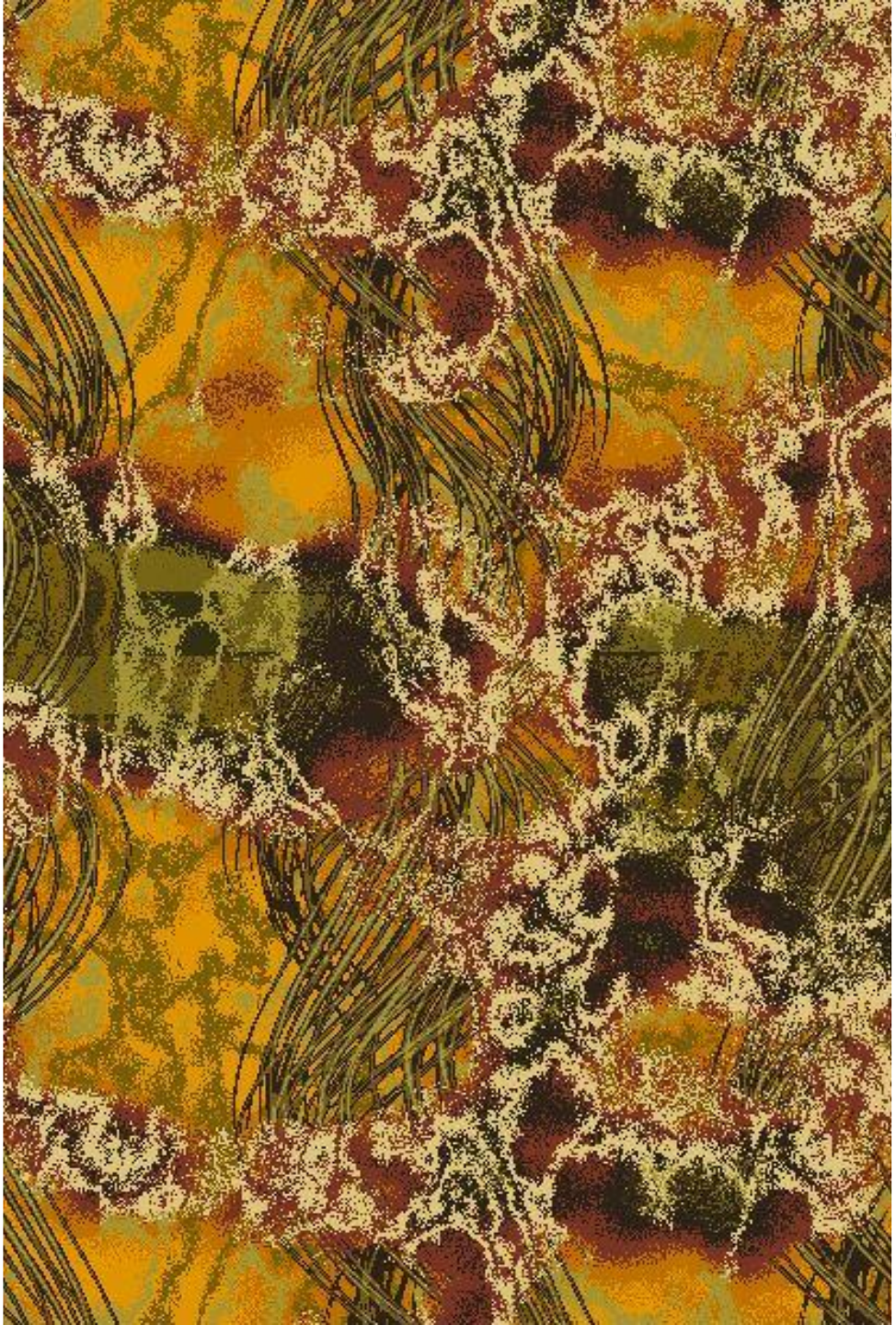
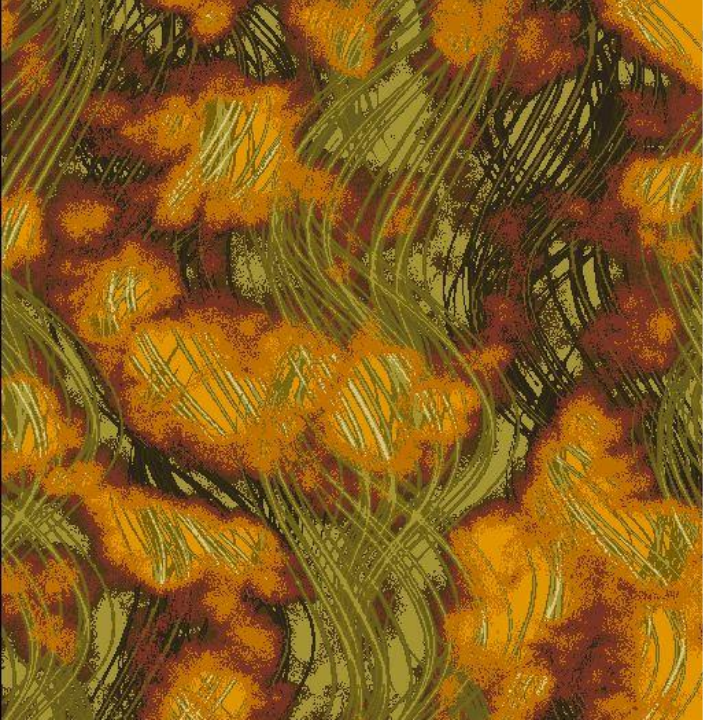
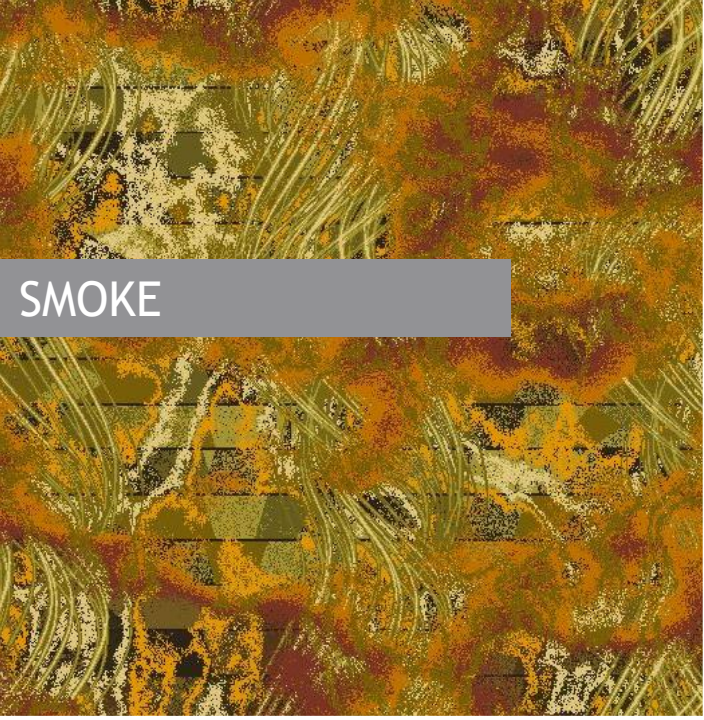


Smoke — Rising from the ashes, it shrouds our view with mystery, covering the irregular shape of the landscape below. Providing glimpses of what used to be.

SMOKE

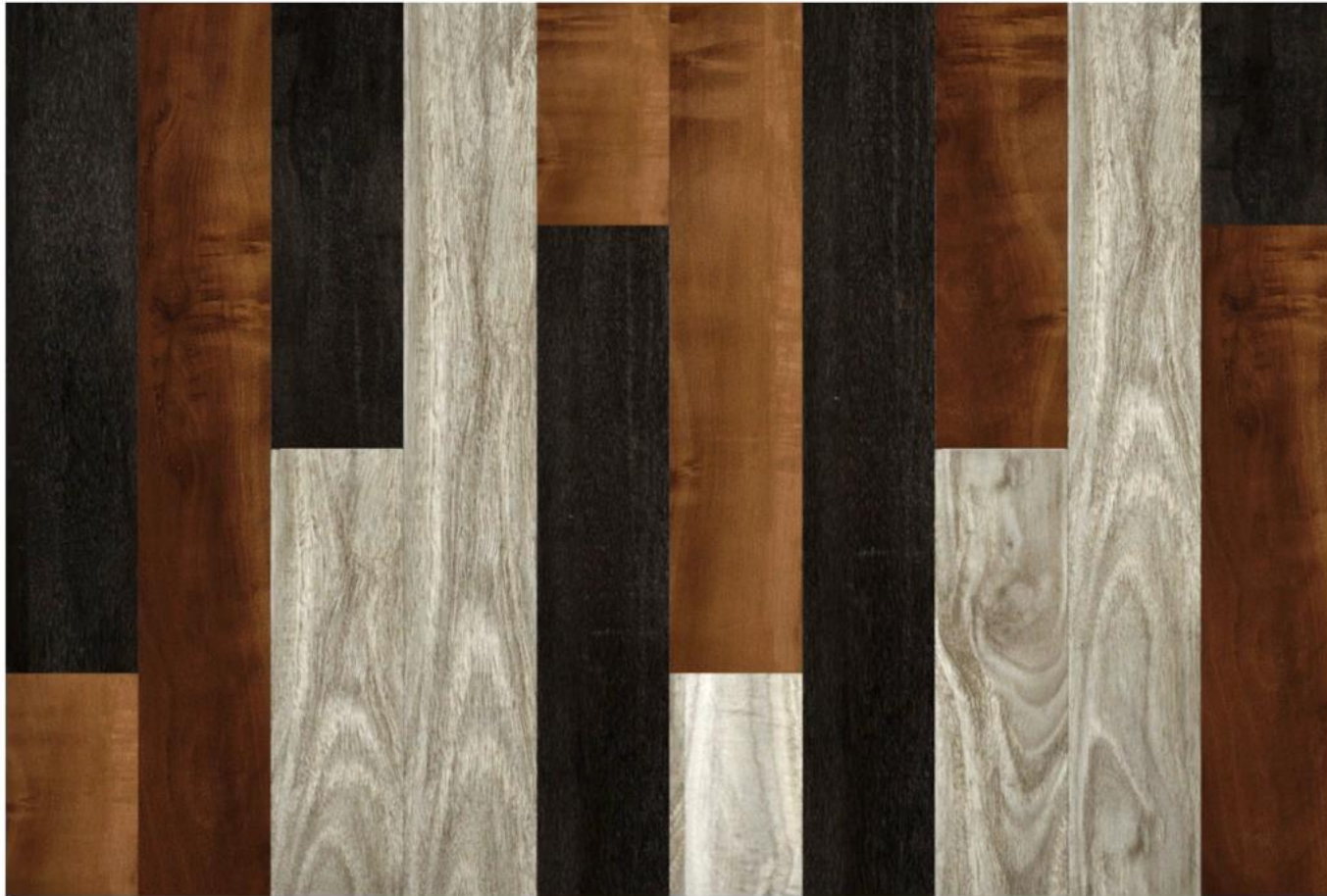


SMOKE



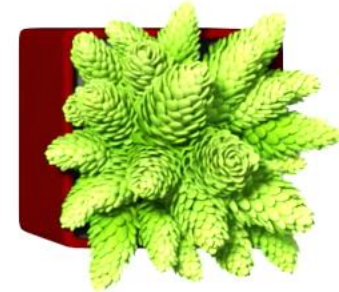
A modern bedroom with a large window overlooking the ocean. The room features a bed with white linens and a wooden headboard, a patterned rug, and a wooden side table with decorative objects. The floor is light wood, and there are several glass containers on the floor near a white pillar.

**A WELL-DESIGNED SPACE
INSPIRES PEOPLE**



RIGIDFORM™ LVT

LUXURY VINYL TILE | DURABLE | WATERPROOF | EASY TO INSTALL



← 7" x 48"
ACOUSTICAL
ATTACHED
PAD

Metro Park (LVT)

Developed specifically for Hospitality applications

Capitalized on top 12 visuals from other running line products

Solid Polymer Core (SPC) waterproof construction

6.2mm total thickness

22 mil wear layer

1.5mm attached acoustical cushion

Click/lock floating installation



METRO PARK LVT: Applewood



METRO PARK LVT: Kokutan



METRO PARK LVT: Pike



METRO PARK LVT



SHENANDOAH SHN145 Moose



PIKE PKK176-121 Bark



KOKUTAN KKT121 Bokken



EUCALYPTUS SALIGNA ECS122 Koala



APPLEWOOD APL77 Cider



KOKUTAN KKT145 Kuro



PIKE PKK144 Cloud



PIKE PKK121-204 Dew



HERITAGE HTG145 Legacy



EUCALYPTUS SALIGNA ECS114 Wombat



PIKE PKK124-208 Antler



TANGIBLE TGB6 Dawn



DIGITAL DYE INFUSION

MILLITRON® & XCALIBUR | HIGH-RESOLUTION BROADLOOM & TILE

20 dpi (Broadloom & Tile)
150 dpi (Tile)



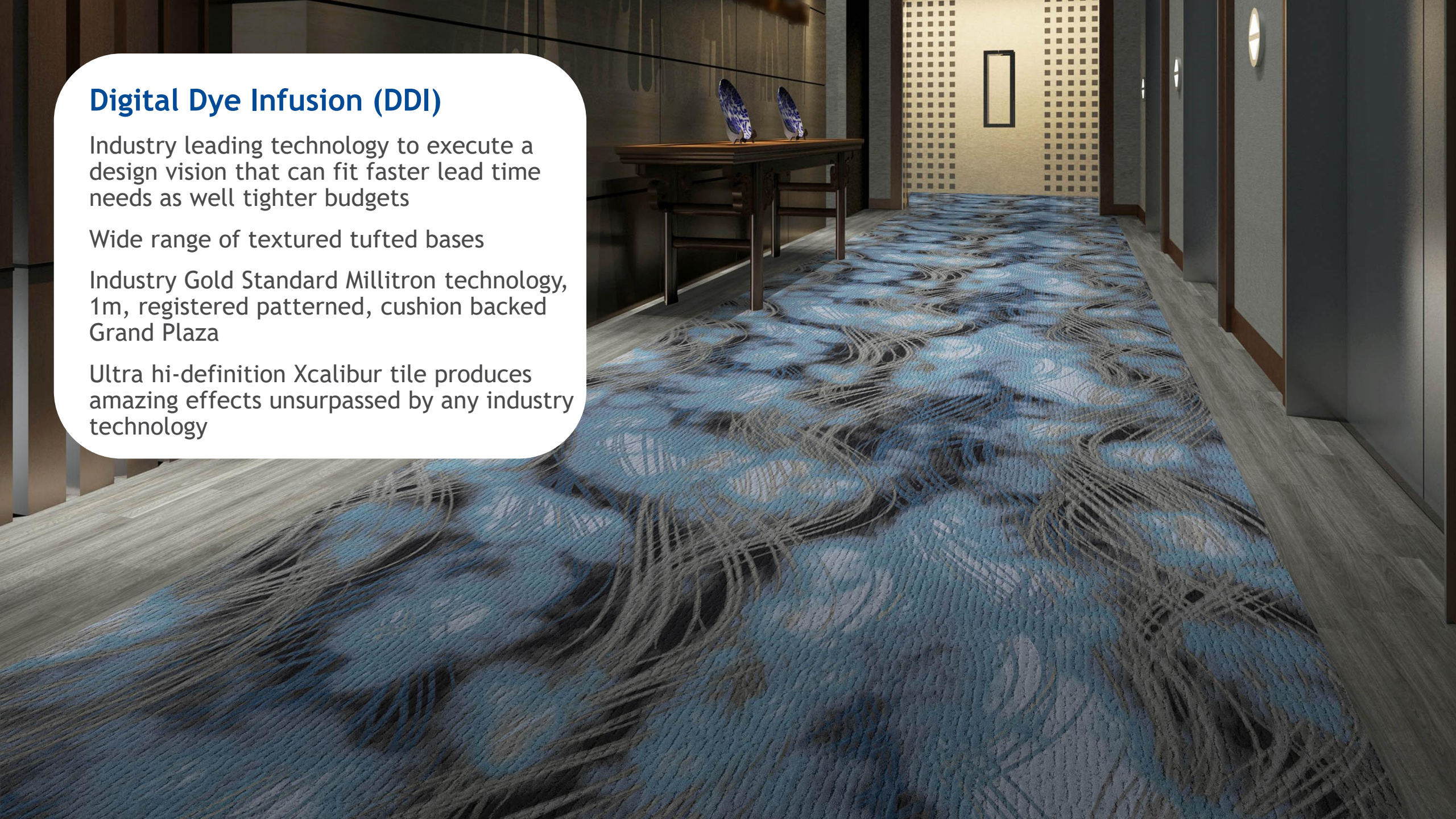
Digital Dye Infusion (DDI)

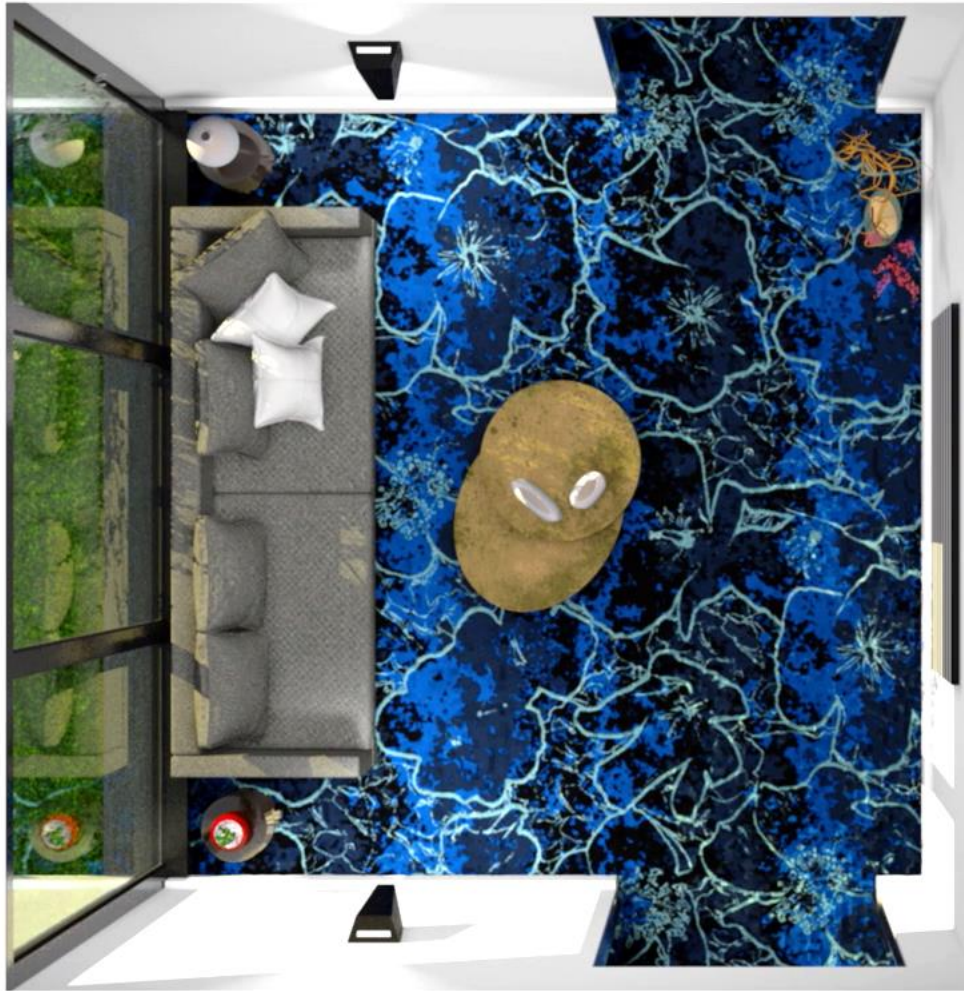
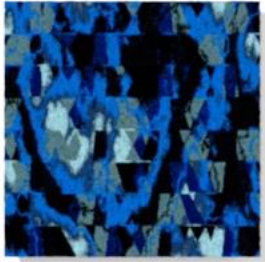
Industry leading technology to execute a design vision that can fit faster lead time needs as well tighter budgets

Wide range of textured tufted bases

Industry Gold Standard Millitron technology, 1m, registered patterned, cushion backed Grand Plaza

Ultra hi-definition Xcalibur tile produces amazing effects unsurpassed by any industry technology





6 Colors



12 SHADES

COLORPOINT™

COMPUTER YARN PLACEMENT | 1/12 GAUGE FOR SUPERIOR DEFINITION & CONTROL



ColorPoint CYP

Latest high-speed technology in 1/12th gauge, with superior patterning technology

New Aquafil Chromacasa Solution Dyed yarn system with 110 standard colors, 360 total available

13'6" and 15' widths for broadloom

Carpet tile to come



AXMINSTER

DOMESTICALLY PRODUCED | SHORTER LEAD TIMES

80/20 WOOL/NYLON

16 COLORS/PATTERN

480 STD. COLORS

Axminster by Bloomsburg (USA)

Axminster woven carpets and rugs in 80/20
Wool/Nylon blend

480 Standard Colors, Unlimited Matching

Qualities from 7 to 10 rows

Standard yarn dyed lead time 12-14 weeks

Premium dyed in USA lead time 8-12 weeks

Specifications meet all Brands/Flags for
Axminster 80/20 wool/nylon

13'2" width

IMO certification in process



Axminster by Bloomsburg (USA)

Family owned, established in 1976

Focus on employee success and attention to manufacturing excellence is aligned with Milliken's culture and long-term vision

Widely known in contract and residential for the highest quality products

Only mill in the world with three woven technologies under one roof - Velvet, Wilton and Axminster, which is most relevant to Milliken Hospitality

High speed, latest technology looms in place with several more in development, Bloomsburg has over forty looms currently in operation



Behind
The Scenes

AXMINSTER by Bloomsburg USA

BEHIND THE SCENES : BLOOMSBURG AX

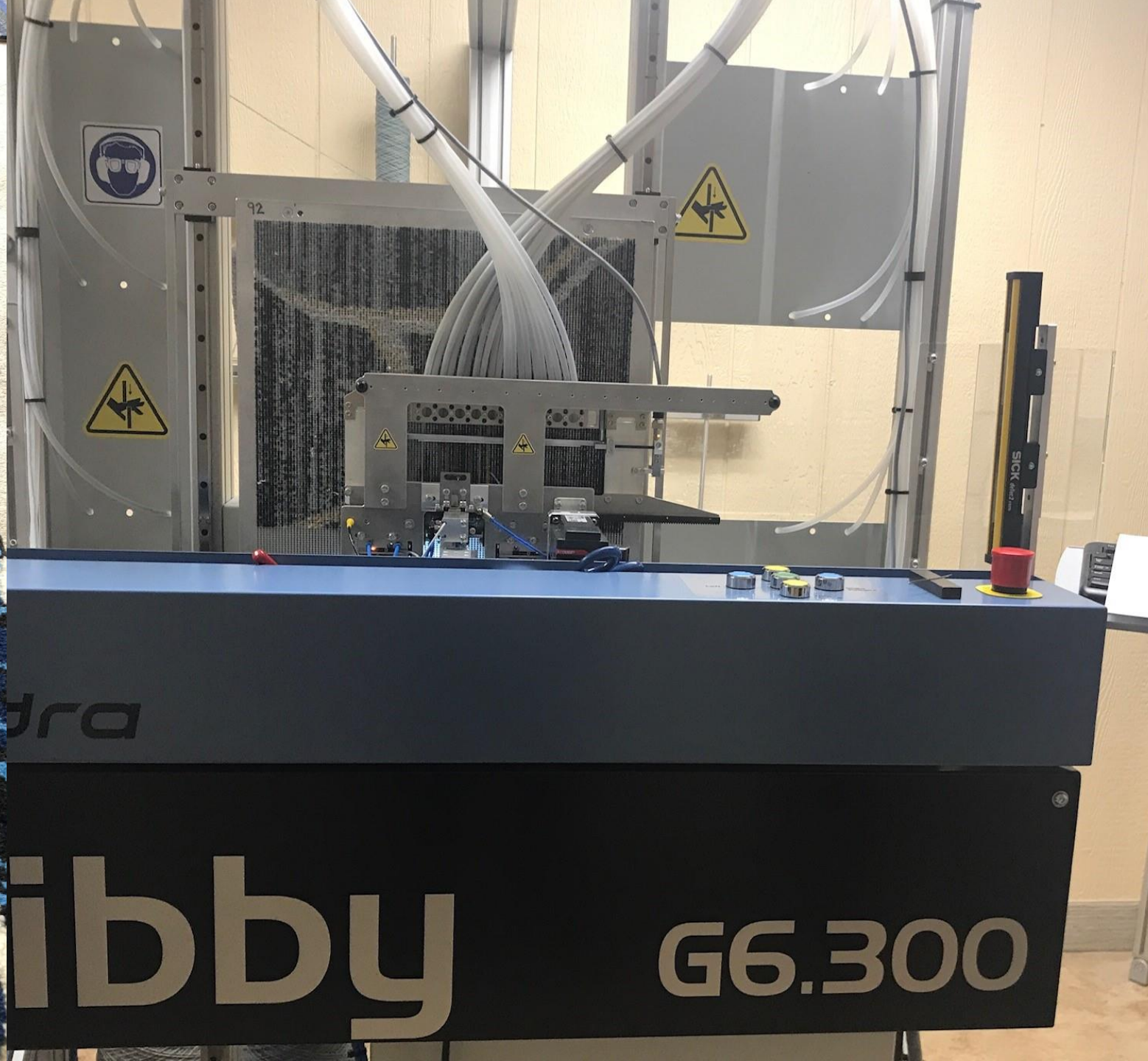


BEHIND THE SCENES : BLOOMSBURG AX



The New Milliken Hospitality

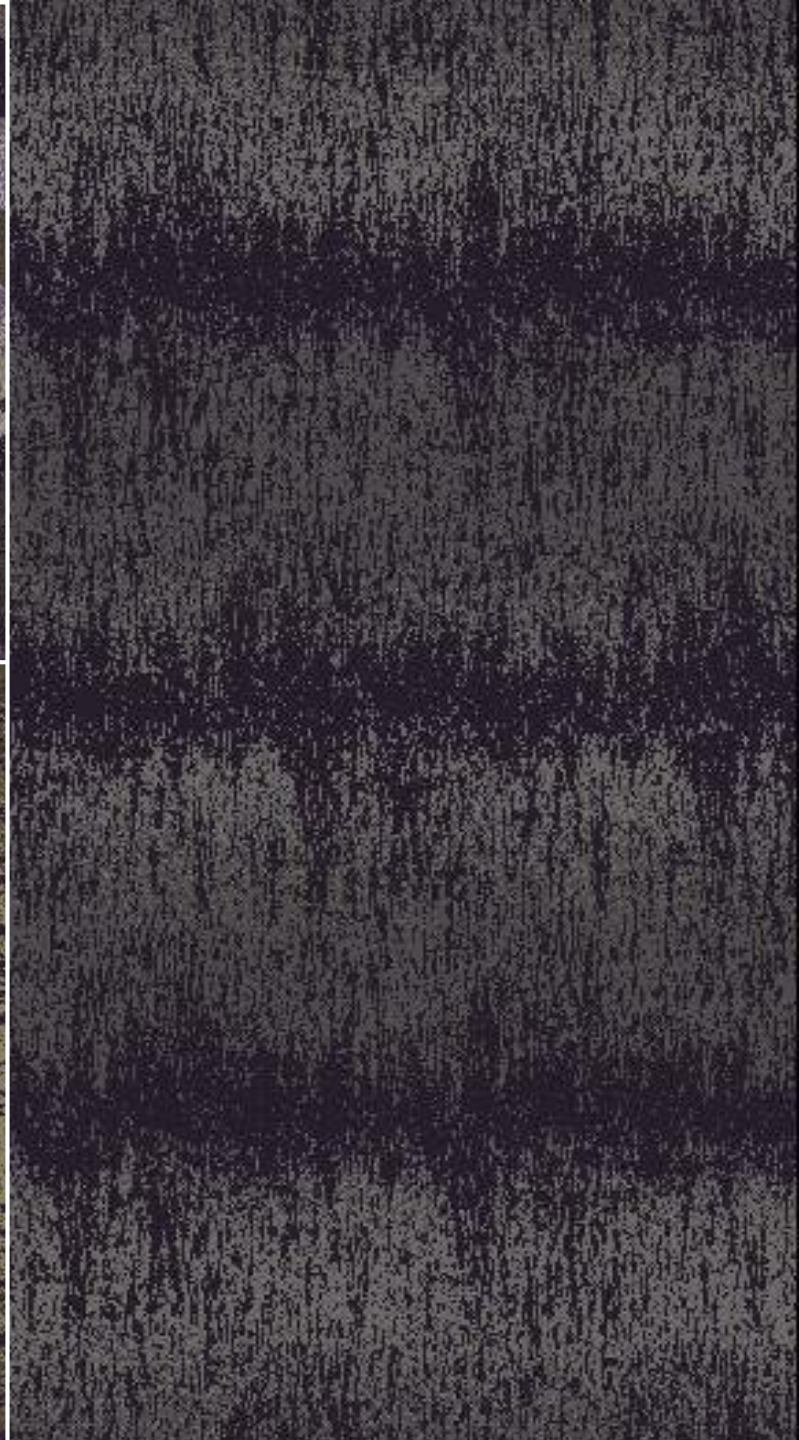
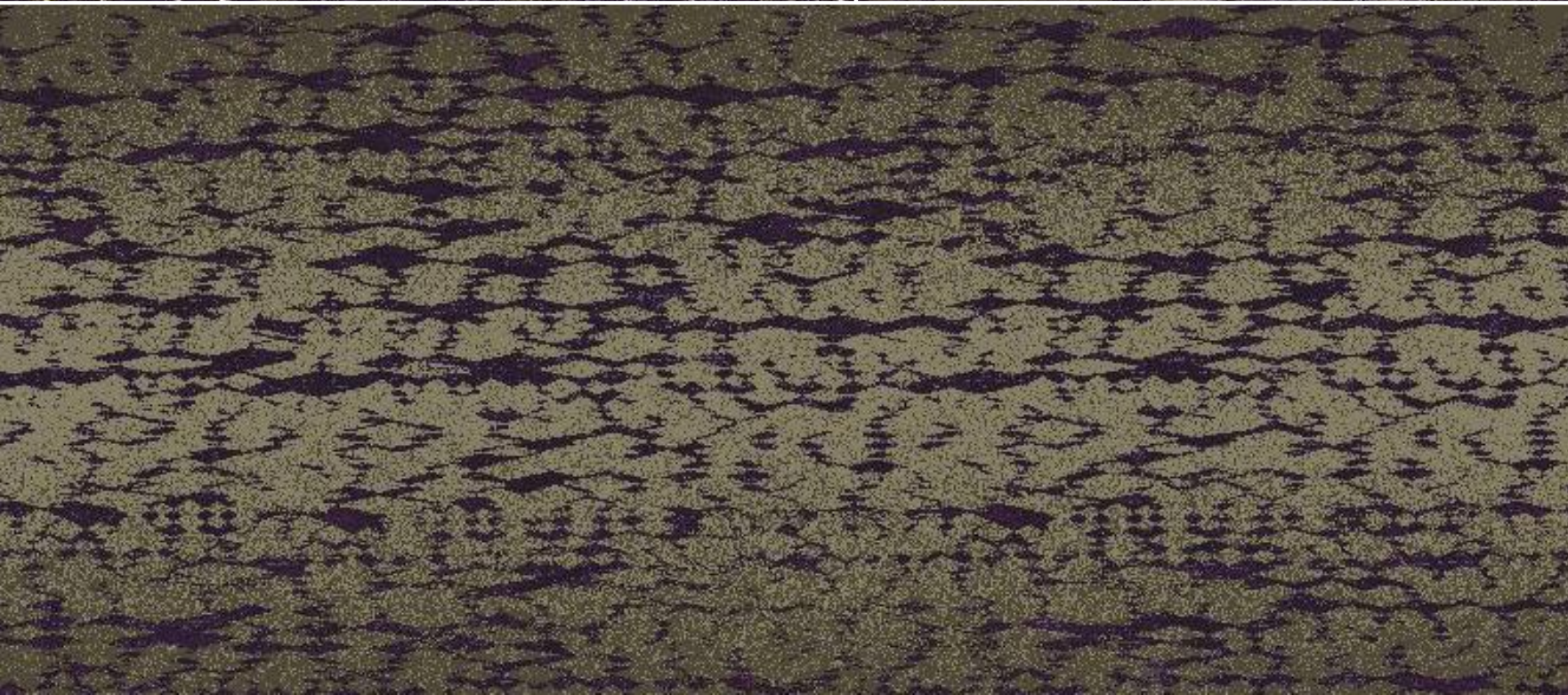
BEHIND THE SCENES : BLOOMSBURG AX

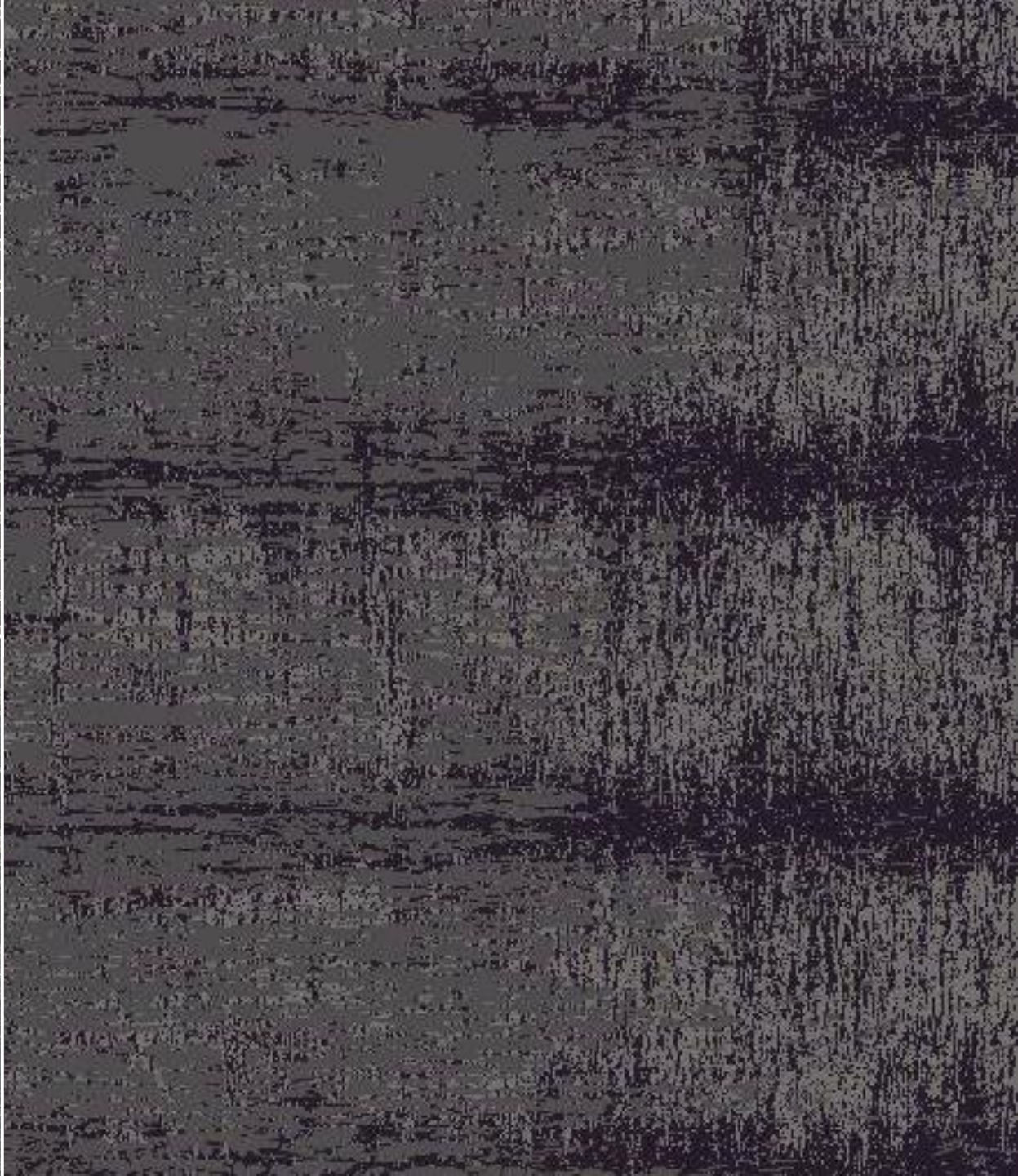
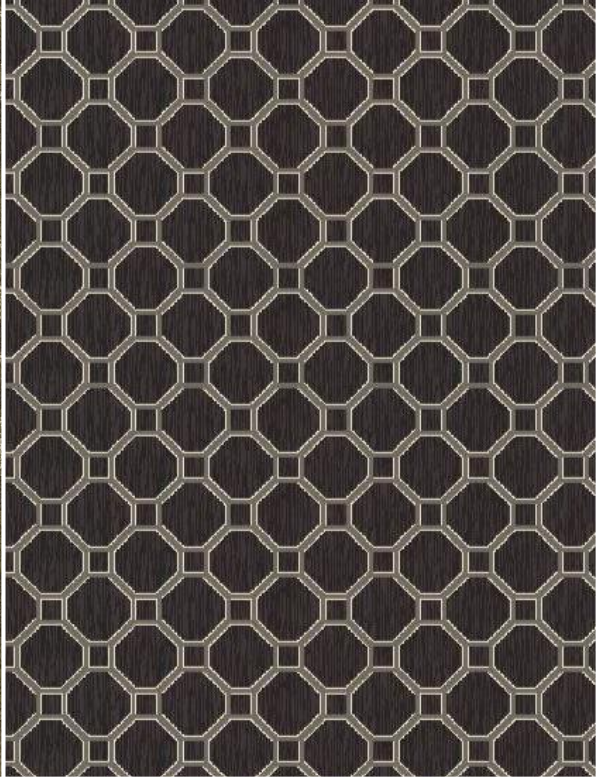


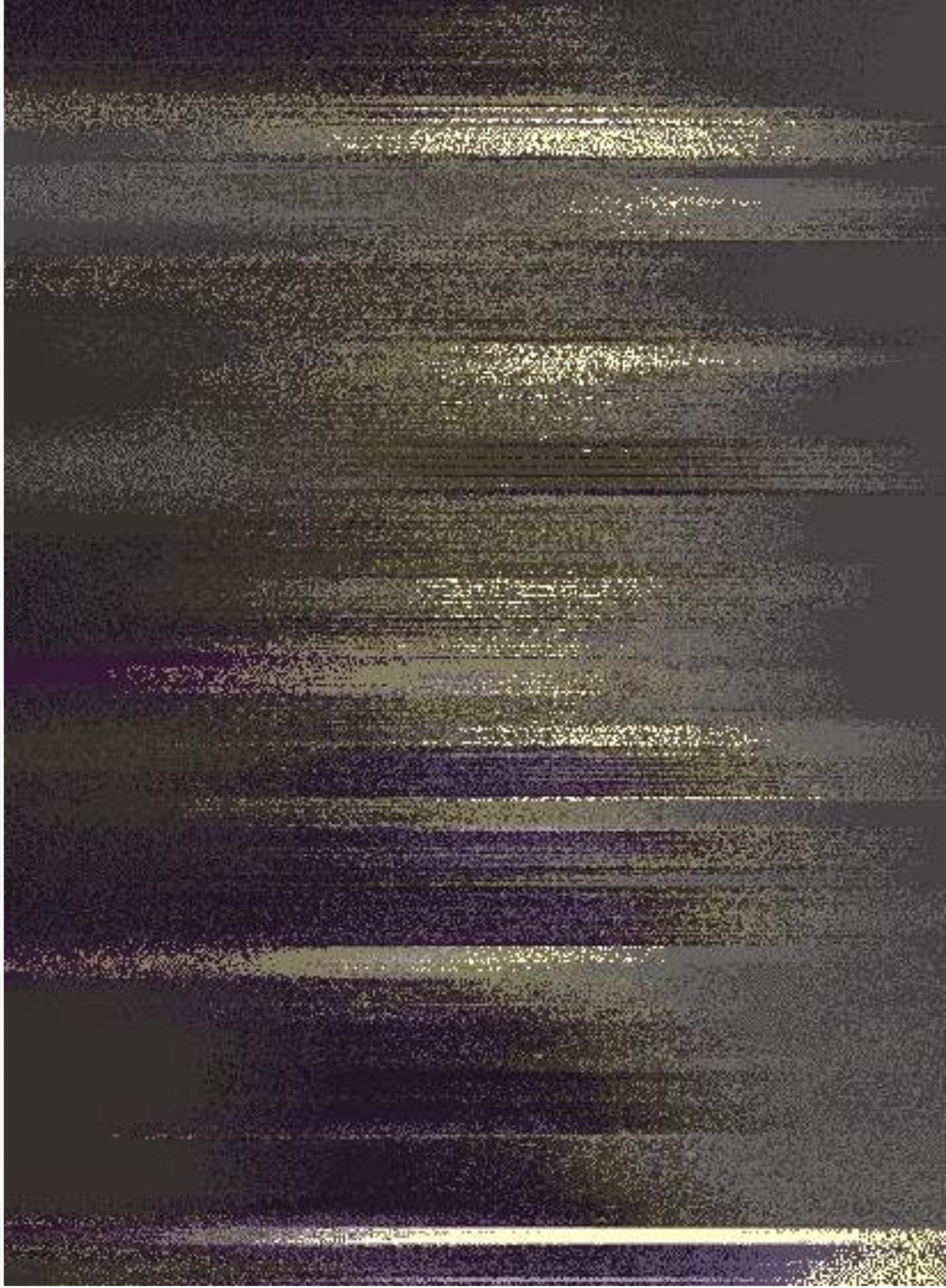
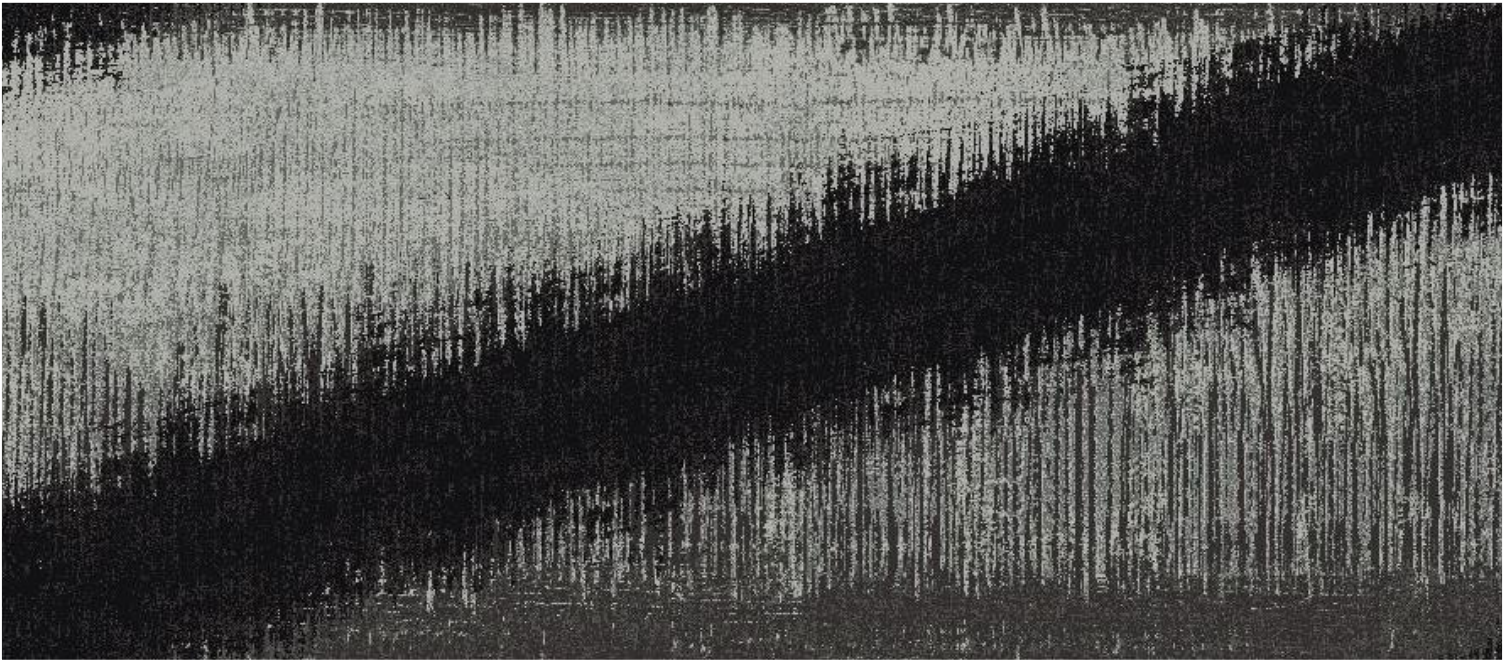


Creative
Beginnings

READY TO CREATE IN AX, CYP, DDI









AX | CYP | DDI | LVT

THE NEW *Milliken* HOSPITALITY

ROBERT
LONGO
CHARCOAL

THE NEW *Milliken*[®] **HOSPITALITY**